



SMT-i5264 USER GUIDE

(ED.01)



CONTENTS

Term and Abbreviation definition	3
Revision History	3
1. IP AOM Outline	4
1.1 IP AOM explanation	4
1.2 IP AOM Organization	4
2. IP AOM Network setting method	5
2.1 Network setting that use IP Phone.....	5
2.1.1 IP AOM Operation.....	5
2.2 Network setting that use HTTP.....	6
2.2.1 IP AOM Operation.....	6
2.2.2 HTTP Login screen and process.....	6
2.3 S/W Upgrade.....	8
2.3.1 Run TFTP server program and select folder including AOM's s/w	8
2.3.2 Start upgrading S/W using Web.....	9
2.4 Troubleshooting through the LED state	10
2.5 LED State during IP AOM Upgrade	12
Appendix 1. IP-AOM Setup Guide for ITP-5112L	13
Appendix 2. PnP use for IP AOM registration	16
Network environment and DHCP server configuration.....	16
System MMC setting	17



Term and Abbreviation definition

AOM	Add On Module
DHCP	Dynamic Host Configuration Protocol
PnP	Plug and Play

Revision History

EDITION	DATE OF ISSUE	REMARKS
00	-	First Edition
01	28 th Oct, 2010	LED numbering order reassigned Appendix 1~2 added.

1. IP AOM Outline

1.1 IP AOM explanation

IP AOM(SMT-i5264) is registered to OfficeServ system and cooperates with various IP phones(5112L /5121D / 5114D). IP AOM provides various functions that OfficeServ supports using 64 keys.

1.2 IP AOM Organization

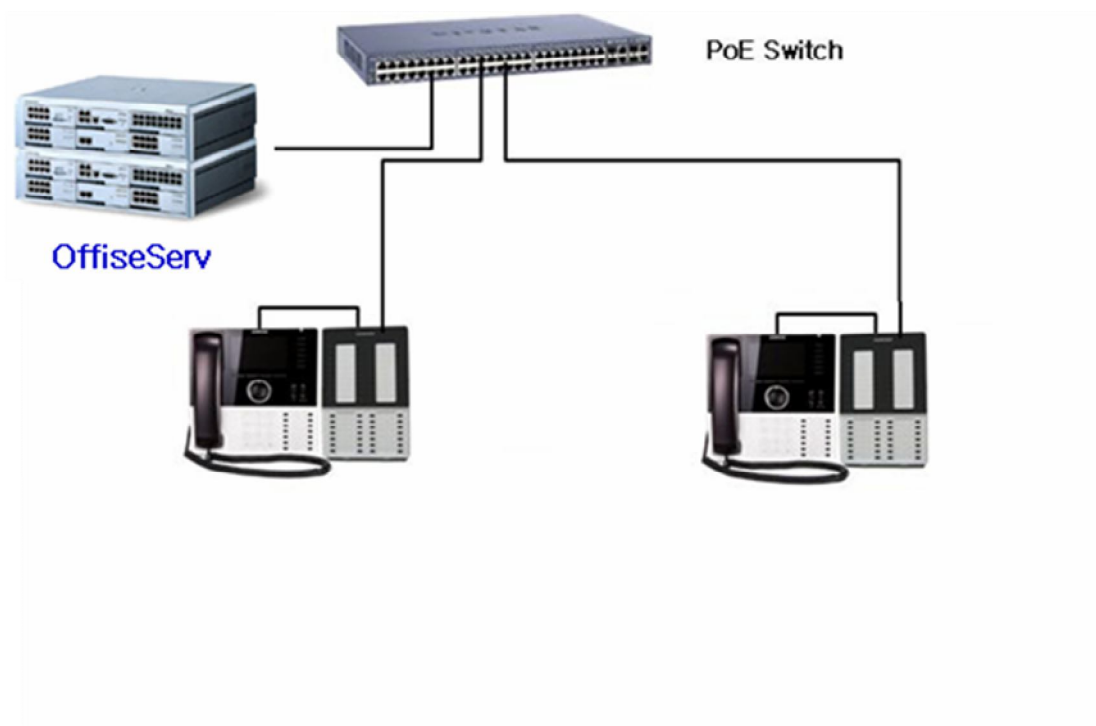


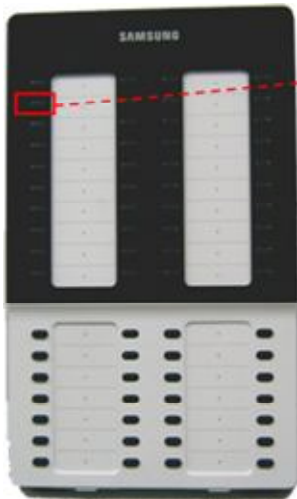
Figure 1. IP AOM Network Configuration

2. IP AOM Network setting method

2.1 Network setting that use IP Phone

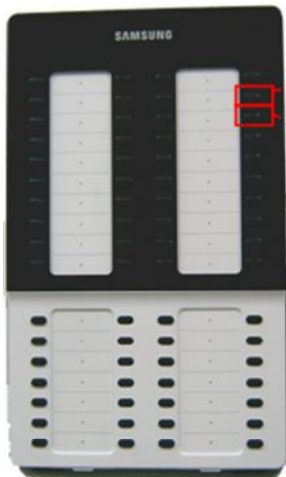
2.1.1 IP AOM Operation

- When the IP AOM reboots, press **2th button** until 8th and 12th button blink to enter the setup mode.



Press 2th button to enter the setup mode.

- When 50th and 51th buttons blink, press **51th button** to initialize network information **(50th button is used to be factory-reset mode.)**



50th button is used to be factory-reset mode.

If 51th button is pressed, AOM's network information is changed to default value. :
(IP: 10.0.0.3)

- In this state, wait to finish network setup procedure by IP phone or by PC.

※ If IP AOM and IP Phone are connected to Switch, you can setup only one IP AOM at a time.(If you setup two IP AOMs at the same time, IP conflict occurs because IP AOM's default IP is same.)

2.2 Network setting that use HTTP

2.2.1 IP AOM Operation

- You can also set network information by using PC's web browser(ex) MS explorer).

(Before connecting to IP AOM, you have to change PC's IP to "10.0.0.xxx"to connect IP AOM.)

(Refer to front chapter for method to change IP AOM's IP to default value.)

- If IP AOM is running in the registered state, you can connect to current IP AOM's IP and change network setting.

2.2.2 HTTP Login screen and process

- <http://10.0.0.3:8080>(port is 8080. If IP AOM is acting, you can connect to current IP)

- ID is "admin" and password is "samsung".

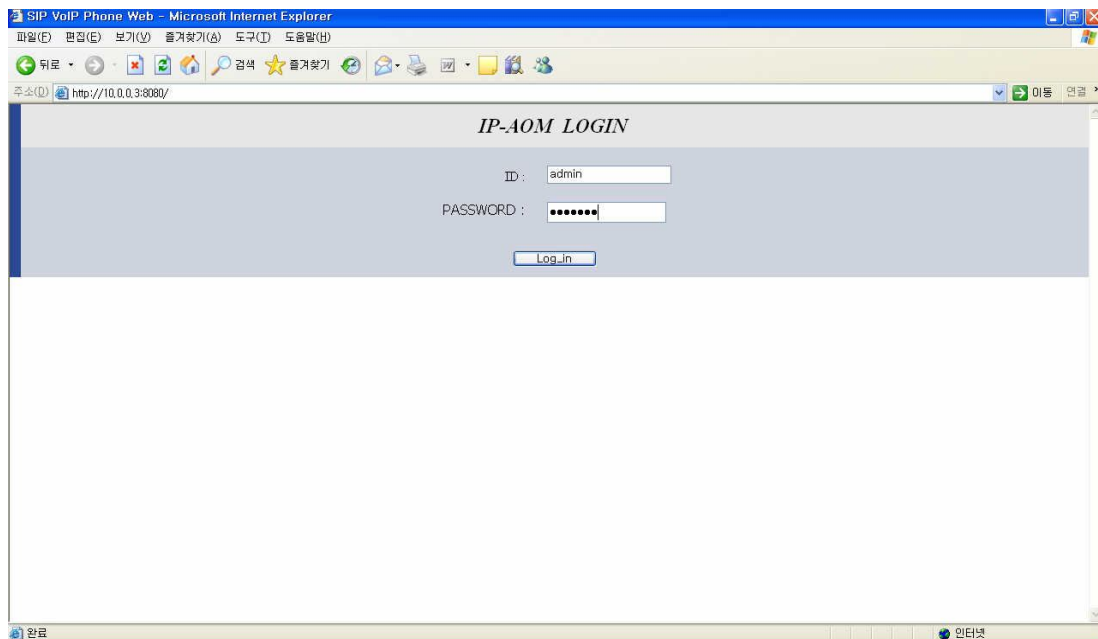


Figure 2. HTTP Initial login screen

2) Change each value and reboot IP AOM to adapt changed value.

- IP AOM IP, netmask, gateway

- System IP, id/password

- VLAN, 802.1x
- Image Upgrade

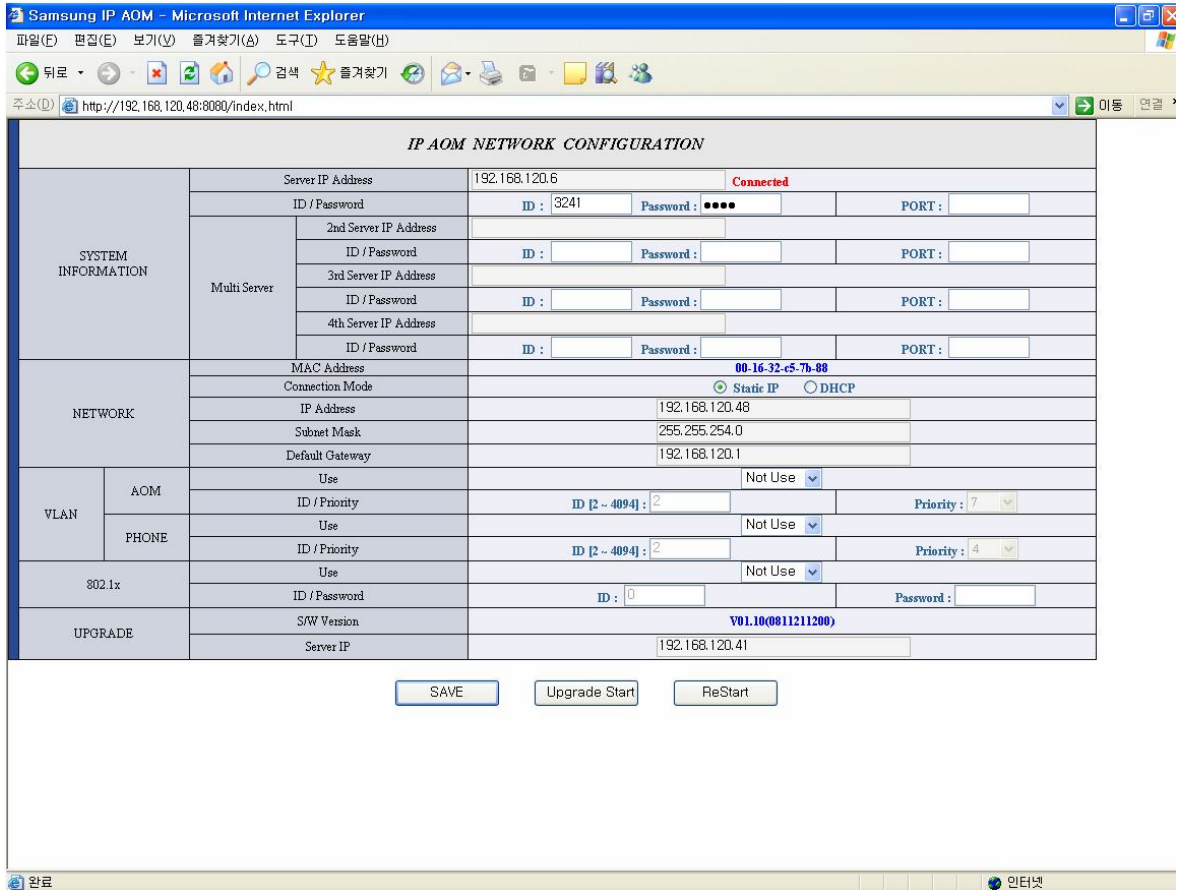
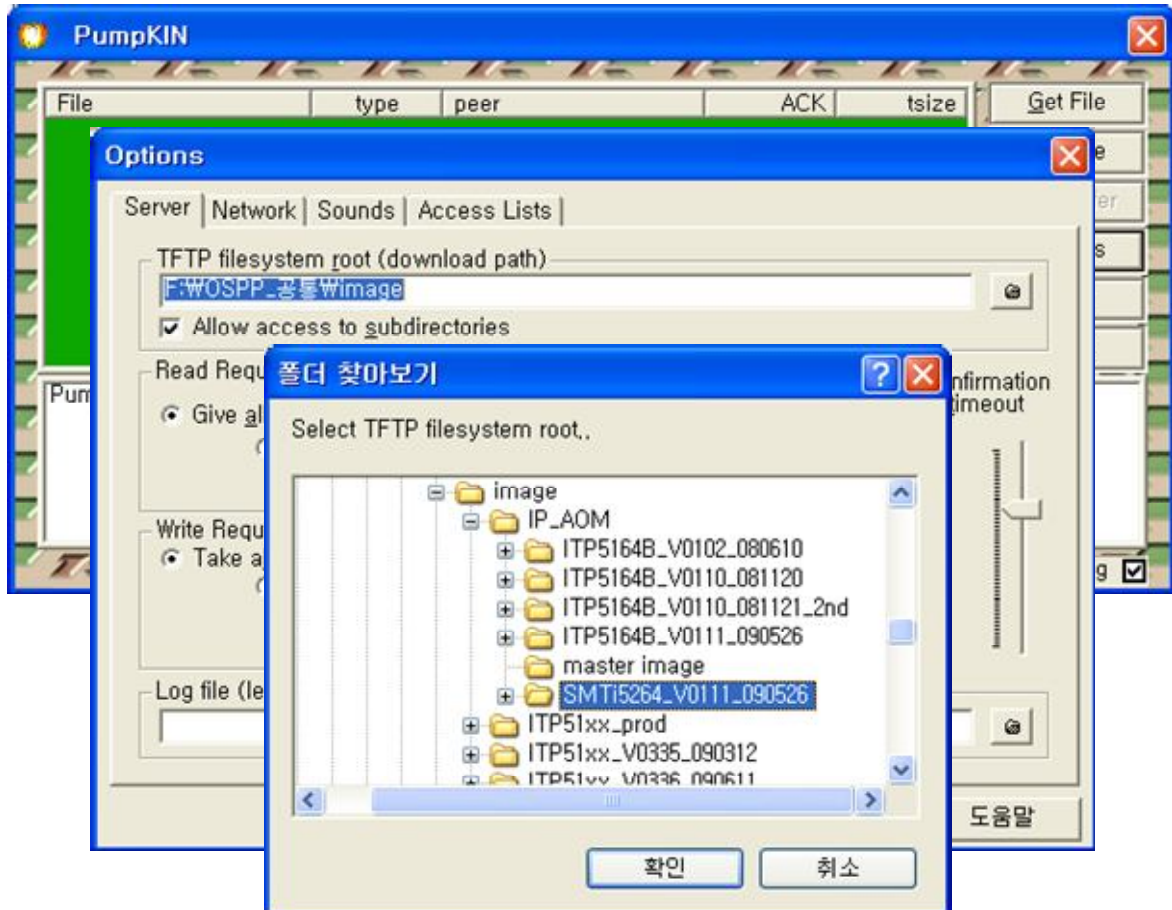


Figure 3. HTTP setting screen

2.3 S/W Upgrade

2.3.1 Run TFTP server program and select folder including AOM's s/w



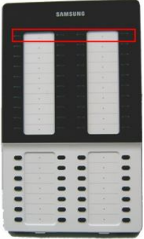
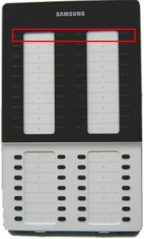
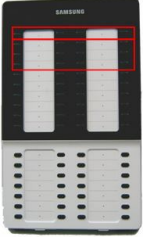

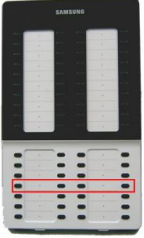
2.3.2 Start upgrading S/W using Web.

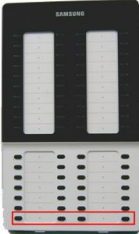
- Enter upgrade server IP and select "Upgrade Start" button to start upgrading S/W.

		Server IP Address	192.168.50.77		Connected	
SYSTEM INFORMATION	Multi Server	ID / Password	ID :	Password :	PORT : 41	
		2nd Server IP Address				
		ID / Password	ID :	Password :	PORT :	
		3rd Server IP Address				
		ID / Password	ID :	Password :	PORT :	
NETWORK	MAC Address	00-00-00-11-12-13				
	Connection Mode	<input checked="" type="radio"/> Static IP <input type="radio"/> DHCP				
	IP Address	192.168.50.90				
	Subnet Mask	255.255.255.0				
	Default Gateway	192.168.50.1				
VLAN	AOM	Use	Not Use			
	PHONE	ID / Priority	ID [2 - 4094] :	Priority :	1	
802.1x	PHONE	Use	Not Use			
	PHONE	ID / Priority	ID [2 - 4094] :	Priority :	1	
UPGRADE	802.1x	Use	Not Use			
	802.1x	ID / Password	ID :	Password :		
	S/W Version	V01.09(0811120900)				
	Server IP	192.168.50.78				

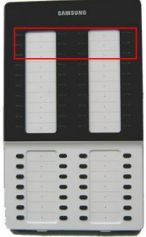
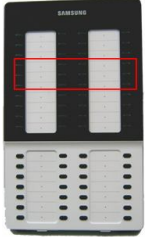
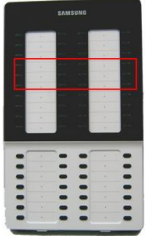
Verify current version.
 Enter upgrade server IP and select "Upgrade Start"
 After finishing download S/W, restart IP AOM.

2.4 Troubleshooting through the LED state

LED state	Problem	Solution
 <p>First Line is On.</p>	<p>There is no response from any IP phone. (AOM is PnP mode)</p>	<ul style="list-style-type: none"> - Check IP-Phone status. - Check AOM's configuration information in the SCM Administrator.
 <p>First Line is Blink</p>	<p>AOM tries to register to system, but no response.</p>	<ul style="list-style-type: none"> - Check the system status. - Check the terminal or system network.
 <p>One of Line2 ~ Line4 blink (First Link blink at the same time)</p>	<p>AOM receives error response from server. (LED blinks according to error's cause.)</p>	<ul style="list-style-type: none"> - Check the user ID and password in AOM.
 <p>Line 10 is On.</p>	<p>LAN cable is disconnected.</p>	<ul style="list-style-type: none"> - Check the LAN cable.
 <p>Line 13 is On</p>	<p>When AOM works in the DHCP mode, it cannot receive IP from DHCP server.</p>	<ul style="list-style-type: none"> - Check the DHCP server

 <p>Line 16 is On.</p>	IP address conflicts.	- Check the IP address whether it has been using in other device.
---------------------------------------------------------------------------------------------------------	-----------------------	-------------------------------------------------------------------

2.5 LED State during IP AOM Upgrade

LED state	explanation	remark
 <p>Line1 ~ Line3 is ON one after the other</p>	<p>This status is that AOM receives image from TFTP server and write to flash.</p>	
 <p>Line4 ~ Line5 ON</p>	<p>Upgrade process ends successfully. (Image is written to flash.)</p>	
 <p>Line4 ~ Line5 Blink</p>	<p>Upgrade status is fail. - Check TFTP server setting value. - Check LAN cable connection.</p>	<p>Retry after rebooting.</p>



Appendix 1. IP-AOM Setup Guide for ITP-5112L

- Select menu 3. Network Setup → 7. IP AOM Setup.

Network Setup
1. Manual IP 2. DHCP 3. PPPoE 4. VLAN(LAN Port) 5. VLAN(PC Port) 6. TOS 7. IP-AOM Setup

- In the IP-AOM Setup menu, sequentially input setup information for IP AOM.

IP-AOM Setup - Active
1. Manual IP 2. DHCP

- IP address, subnet and gateway information are not necessary in the DHCP mode.

- Input IP Address for IP AOM

IP-AOM Setup - AOM IP
AOM IP <u>192.168.0.99</u>

- Input Subnet mask for IP AOM

IP-AOM Setup - AOM Subnet
AOM Subnet <u>255.255.255.0</u>



- Input Gateway IP address for IP AOM

IP-AOM Setup - AOM Gateway

AOM Gateway

192.168.0.1

- Input Server IP address to register IP AOM

IP-AOM Setup - Server IP

AOM Server IP

192.168.0.2

- Input IP AOM ID

IP-AOM Setup - AOM ID

AOM ID

3240

- Input registration password.

IP-AOM Setup - AOM Password

AOM Password

- Port number should have eight hex digits for IAP system(not OfficeServ system)

IP-AOM Setup - Port(IAP Only)

Port Number

00000000

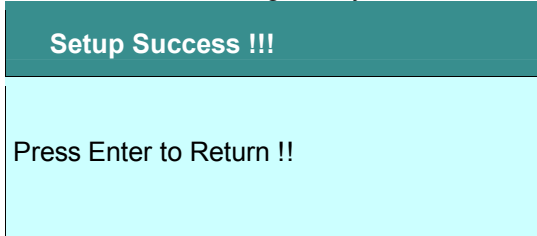
- If you finish inputting setup information, IP phone will send the message "AOM_ALIVE_REQ" and waits for response.

- If reply comes from IP AOM, IP phone transmit setup information to IP AOM.

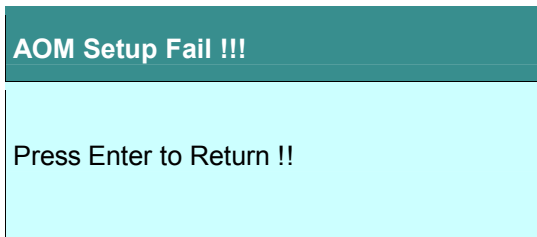
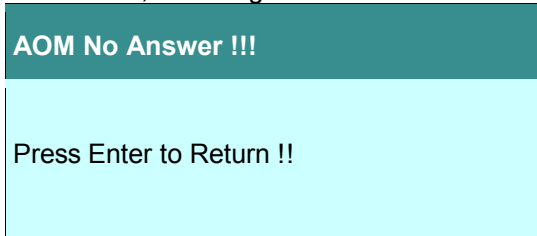
- If no response comes from IP AOM, IP phone displays error window after a while.



- If the setup completes normally, 'Setup Success' message will be shown. After then IP AOM reboots and tries to register system.



- If there is no response from IP AOM or setup fails, upper error message is displayed. In this case, check again connection between IP AOM and IP phone.



Note : You can set the configuration for SMT-i5264 on Engineer Mode.

- How to enable 'Engineer Mode'.
Menu Phone -> 05. Phone Information -> * -> 1 -> 5 -> 3 -> #
- On Engineer mode, you can control the SMT-i5264's configuration using AOM menu.
Network -> AOM.

Appendix 2. PnP use for IP AOM registration

Without any configuration process in the IP AOM, IP AOM can be automatically registered to the OfficeServ system using DHCP server and specific DHCP option fields.

- To use PnP mode, IP AOM has to be factory-reset state.
- After doing factory-reset IP AOM, it runs at DHCP mode by default.
- IP AOM can't use PnP mode at the static IP mode.

(Using static IP mode means that manual configuration process is required in the IP AOM.)

Network environment and DHCP server configuration

■ DHCP server setup

- To use PnP mode, following two DHCP server's option are used.

(Because various types of DHCP server are used, it's not possible to explain option setup process in this document. Refer to your DHCP server's configuration guide to setup this options.)

※ Two DHCP options are required to support IP AOM's PnP

- (1) TFTP_Server_Name(66): "SEC_ITP" (66 is DHCP options's number.)

(This option is used to distinguish our DHCP server from the other one under the circumstance one more DHCP servers are running.)

- (2) TFTP_Server_IP(128): OfficeServ's IP (128 is DHCP options's number.)

(Using this OfficeServ's IP address, IP AOM tries to register to OfficeServ.)

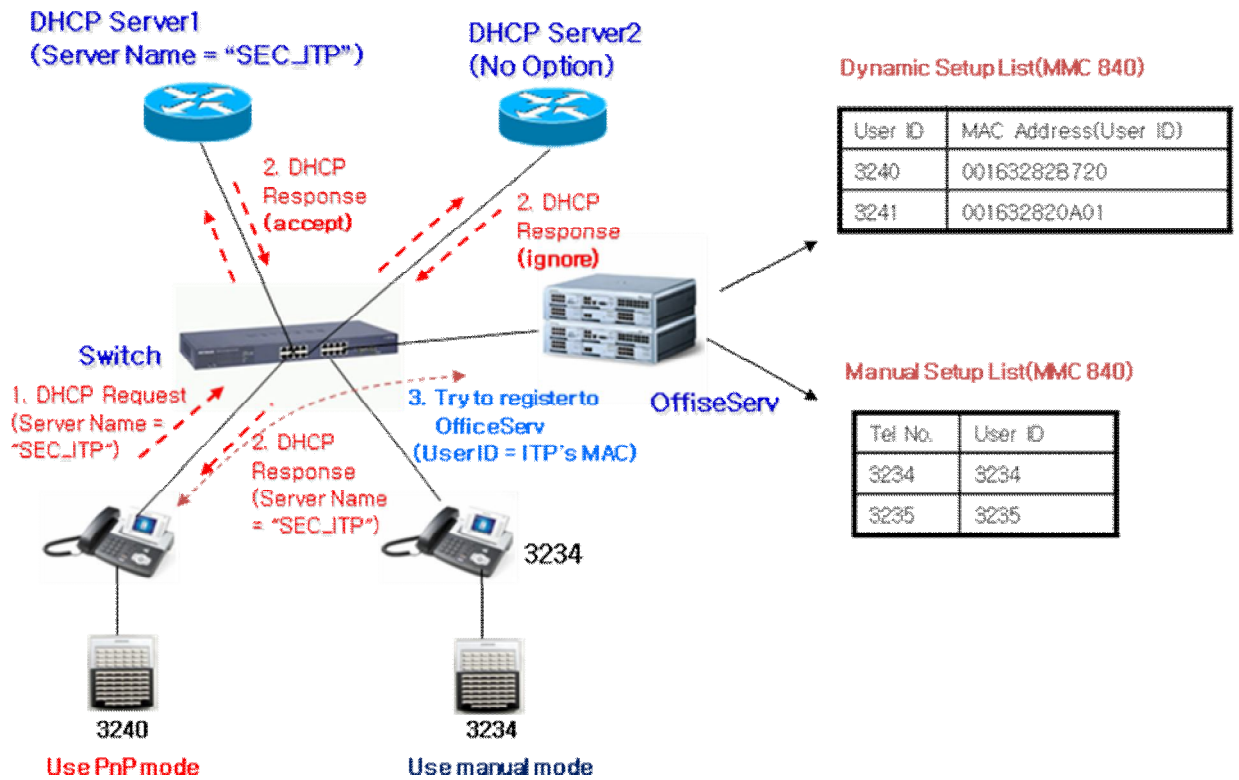


Figure 1. IP AOM PnP setting environment

※ As above picture, Some IP AOM can use PnP mode and some IP AOM can use manual mode simultaneously.

System MMC setting

- In the MMC 840, input ITP's MAC address to USER ID field.
(MAC address should be written as a capital letter.)

[3240]USER ID	[3241]USER ID
00163282B720	001632820A01

- After DHCP server's option setup and MMC setup complete, power on IP AOM to register.
- In the beginning of booting process, IP AOM gets own IP and OfficeServ's IP address from DHCP server.
- IP AOM sends register message including own MAC address instead of IP AOM's USER ID.
- OfficeServ sends "Register OK" message including IP AOM's USER ID and setup process is completed.