

OfficeServ100 Offline

wrote 2006.03.21

<Offline Mode>

In order to manage OfficeServ system , you may need not only Online mode but also Offline administration mode for checking up and maintenance and repairing.

Until Now to operate offline administrator program, we have used RS-232C as a interface between OfficeServ system and PC.

But there are such problems of network speed and preparing the cable and limitation of range between OfficeServ system and PC.

So we added the LAN feature which make it possible to access Offline administration mode by using telnet.

The following describes the two type of methods which are using SIO port and Telnet.

(In order to use telnet you have to know the IP address of MCP Board in advance.)

Consol's SIO port Connection Setup and Lan Configuration

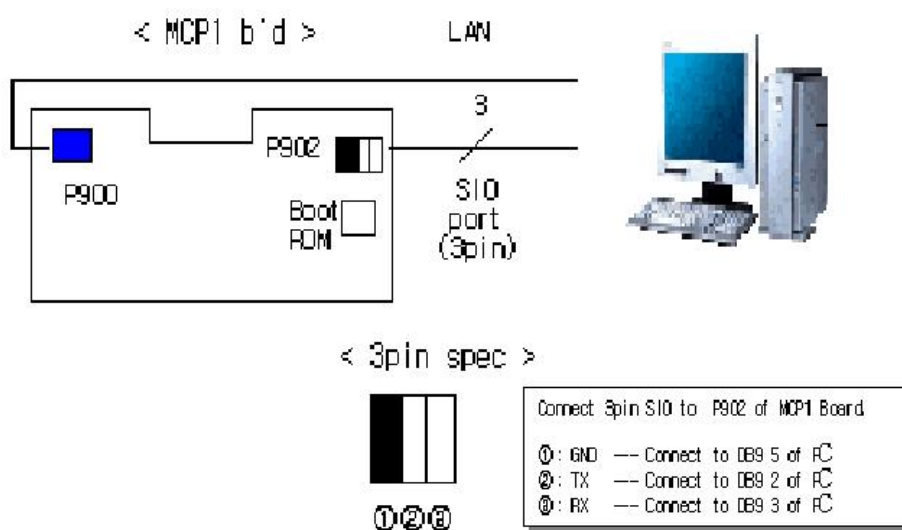


Figure 1. MCP1 3Pin SIO Configuration

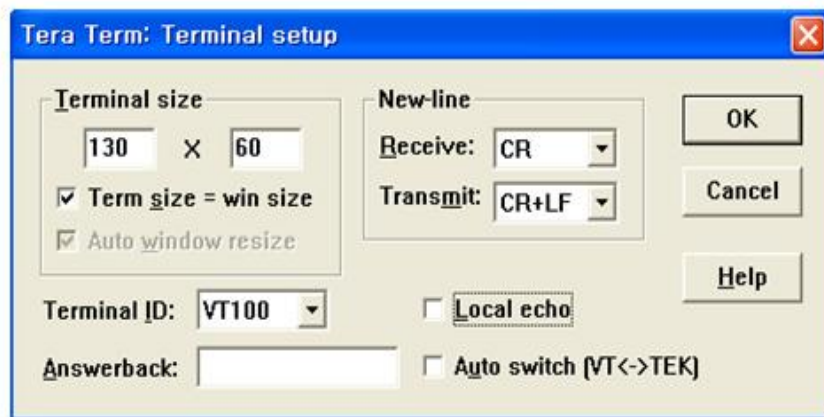


Figure 2. SIO PC Setup.

(Caution) when you setup NewLine, you have to choose CR+ LF in Transmit item.

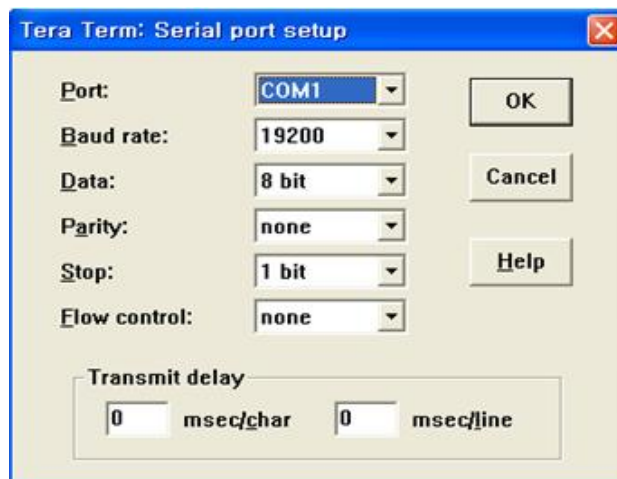


Figure 3. SIO PC Setup.

1. The method of Offline mode Access (Refer to above figures)

1.1 Using SIO port

1) After you connect PC to Consol SIO port(3 pin) in MCP1 B'd of OS100 with 19200 BPS speed.

Power on or press reset button then you could see the follow blue colored message.

And press the Enter Key. (the red colored is the message which you have to input)

```
[Boot PGM] <<< Boot Program of OfficeServ 100 System >>> OS100 B00T V1.03: 2004/12/01
[Boot PGM] Format Check is O.K
[Boot PGM] Success to the getting startup file, try to loading to DRAM
[Boot PGM] To be display '#' mark every 128K byte loading to DRAM
# <= When This Time Press [ENTER] Key
```

2) After System accept the Enter Command it shows the following Message .

And System would wait for user's password input.

Please input your password : **os100samsung**

Be careful not to input anything or wrong password.

If you do not input anything or input the wrong password , after 30sec later system would be restarted. If it is normal, you could see the following Menu list.

```
[Boot PGM] STOP the load to DRAM by Consol command
[Boot PGM] OffiecServ100 System, Enter password !
os100samsung
```

```
*****
* OfficeServ 100 Consol command help ... IAP Development Group          *
* [Version: OS100 BOOT V1.03: 2004/12/01]                                *
* -----*
* HELP      ... OfficeServ 100 help command                             *
* LOAD      ... File upload from PCMMC via lan interface                 *
* DIR       ... File list in NAND Flash Memory                          *
* READIP    ... Network parameter infomation display(IP,MAC ...)        *
* WRITEIP   ... Network parameter write(IP addr + Auto setting)         *
*           ex) WRITEIP 160.217.70.9                                     *
* WRITEIP2  ... Network parameter write(IP addr + Gateway addr + subnet mask) *
*           ex) WRITEIP2 160.217.70.9 160.217.70.1 255.255.255.0         *
* RESET     ... Restart System                                           *
* DELETE    ... Delete file in NAND FLASH   ex) DELETE os100.pgm        *
* FORMAT    ... Format NAND Flash Memory(All files to be delete)         *
* VER       ... S/W version display                                       *
* READINI   ... Read Startup.ini file                                     *
* LMEM      ... Dump memory(list memory)  ex) LMEM st_addr (end_addr) (w/l) *
* WMEM      ... Modify memory(write memory) ex) WMEM addr val (b/w/l)   *
*
*****
```

1.2 Using Telnet.

Telnet method is only supported in OS100 System.

(Caution 1) To access to Boot Program with Offline Mode by using Telnet

you should try to connect within 5 seconds after Power On or Reset.

To access to Startup Program with Offline Mode by using Telnet

you should try to connect within 15~40 seconds after Power On or Reset.

(Caution 2) In General Telnet Port number uses 23, but in the case of connecting to Boot or Startup Program

You should use the port number 5082

1) By using PC's telnet program (IP : MCP1 B'd IP, Port :5082) connect to the MCP1 B'd

Red color string is input command and blue color is the string shown in your terminal.

2) After connected System will wait for password input.

At that time please input your password (os100samsung) and you can see the Menu list and system would go into Offline mode.

If you do not input anything or input the wrong password then System would be restarted.

```
[Boot PGM] <<< Boot Program of OfficeServ 100 System >>> OS100 BOOT V1.02: 2004/08/23
[Boot PGM] Format Check is O.K
[Boot PGM] OffiecServ100 System, Enter password
os100samsung
```

```
*****
* OfficeServ 100 Consol command help ... IAP Development Group *
* [Version: OS100 BOOT V1.03: 2004/12/01] *
* ----- *
* HELP ... OfficeServ 100 help command *
* LOAD ... File upload from PCMMC via lan interface *
* DIR ... File list in NAND Flash Memory *
* READIP ... Network parameter infomation display(IP,MAC ..) *
* WRITEIP ... Network parameter write(IP addr + Auto setting) *
* ex) WRITEIP 160.217.70.9 *
* WRITEIP2 ... Network parameter write(IP addr + Gateway addr + subnet mask) *
* ex) WRITEIP2 160.217.70.9 160.217.70.1 255.255.255.0 *
* RESET ... Restart System *
* DELETE ... Delete file in NAND FLASH ex) DELETE os100.pgm *
* FORMAT ... Format NAND Flash Memory(All files to be delete) *
* VER ... S/W version display *
* READINI ... Read Startup.ini file *
* LMEM ... Dump memory(list memory) ex) LMEM st_addr (end_addr) (w/l) *
* WMEM ... Modify memory(write memory) ex) WMEM addr val (b/w/l) *
* *
*****
```

2. How to change Boot ROM program

(BootRom could be changed at the time that Start up program is running,

It is not possible On Boot program running)

2.1 Using SIO port

It is the general method to chage BOOT ROM program by using ROM Writer ,

but you can also change BOOT program by entering "chgboot" command after loading "btos100.pgm" in the startup offline mode.

1) you can find the current default IP of MCP B'd by entering the command "readip" at the Offline mode in Startup.

2) If you want to change its ipadress , please enter the command "writeip".

writeip assign generate gateway ip and subnet mask automatically.

To assign manually you can enter the command "writeip2" as following.

EX) WRITEIP2 160.217.070.009 160.217.070.003 255.255.255.000

(second is default gateway and 3rd is subnet mask)

readip <= It is not necessary to enter this command.

[Startup PGM] System Network Configuration

- IP : 165.220.20.105
- GW : 165.220.20.1
- SM : 255.255.255.0
- MAC: 0000F0FF8014

3) To update BTOS100.pgm you have to use the command "load"

the "load" command get uploaded from data from MCP1 and write it down on NAND Flash Memory.

If NAND FLASH Memory has the same name file, it would overwrite its data.

load

[Startup PGM] <<< Please download file from PCMMC >>>

[Startup PGM] System Network Configuration

- IP : 165.220.20.105
- GW : 165.220.20.1
- SM : 255.255.255.0
- MAC: 0000F0FF8014

[Startup PGM] System is ready to download ...

4) Then please open the Communication setup screen in PCMMC, and input the MCP1's IP address.

and then select the menu Option-> File Upload[Offline] , then you could see the File Upload screen.

Here please click the [Open] and select the Btos100.pgm in your local PC.

Please ignore the Name , Version, Date of these file properties which would be shown at that time.

(Current not supported)

Select the File and press [Upload] you could see the delay input screen.

Please set Its value to "0" and press the [OK] button.

Now File Upload would be proceeding .

You could see the follow completed screen in your PCMMC. But Please let it does.

DO NOT CLICK the [OK] BUTTON before the message of "Start save file to the NAND FLASH MEMORY" display on you SIO terminal. Sometimes its completed message might show even while on Uploading.

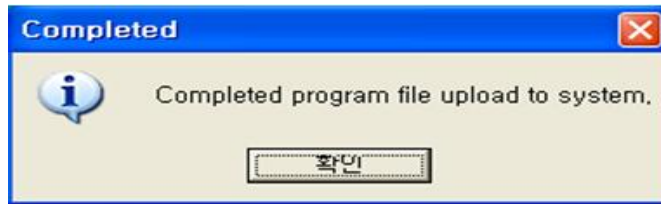


Figure 4. Upload Completed Screen in PCMMC

```
[Startup PGM] Start download file from PCMMC
[Startup PGM] To be display '#' mark every 32K byte downloaded
[1%][10%][20%][30%][40%][50%][60%][70%][80%][90%][100%]
[Startup PGM] Download file Check sum is O.K, Origin CheckSum:8D70, Download CheckSum:8D70
[Startup PGM] Success to delete previous btos100.pgm file

[Startup PGM] Start save file to the NAND FLASH MEMORY
[Startup PGM] To be display '#' mark every 128K byte Write to NAND FLASH MEMORY
##[O.K]
[Startup PGM] End save file to the NAND FLASH MEMORY
```

5) And Power On again or press Reset, go into the Startup program with Offline mode

6) Please check the "btos100.pgm" file was saved by using "dir" command.

7) After Entering "chgboot" command, answer the following question to be 'y'

(If you input 'n' then command execution would be canceled.)

```
[Startup PGM] *****
[Startup PGM] * Warning : Are you sure?(y/n) *
[Startup PGM] *-----*
[Startup PGM] * This command is Manufacturer Only. *
[Startup PGM] * If you answer yes, All content will be clear in the BOOT FLASH MEMORY *
[Startup PGM] *****

y

[Startup PGM] Start change BOOT program (Wait a minute please ... )
[Startup PGM] Success to the getting BOOT file(BTOS100.PGM), try to loading to DRAM
[Startup PGM] To be display '#' mark every 128K byte loading to DRAM
###
[Startup PGM] load file Check sum is O.K, Origin CheckSum:4117, loaded CheckSum:4117, file size:270864 byte
[O.K]
[Startup PGM] Success to the loading to DRAM
[Startup PGM] Now start change Boot program of OfficeServ100 System
[Startup PGM] BOOT FLASH MEMORY TYPE is AMD AM29LV040B, Sector_size is 0x10000

[Startup PGM] Erased Boot flash memory
[Startup PGM] Now start write Boot program on Boot flash memory... Wait a minute please...
|1%-----20%-----40%-----60%-----80%-----100%|
#####[O.K]
[Startup PGM] End of BOOT program change
```

8) After Boot program update is completed , the System would be restarted.

Please check the version and date on the initial screen .

```
[Boot PGM]    <<< Boot Program of OfficeServ 100 System >>> OS100 BOOT V1.02: 2004/08/23
```

2.2 Using Telnet

(Caution)

To access to System at the Offline mode in Startup Program,

Please connect to the MCP1 B'D(IP: MCP1P, Port:5082) within 15~40 seconds using telnet program after Power on or Reset.

Here the time of 15~40seconds mean the time between after boot Program started up and On running Startup Program.

1) It is same to the SIO Port using Method in Offline mode of Startup Program.

(Caution)If Boot program update is completed , system would be restarted,

At that time, the following message would be shown just before restarting

This restart process is going by SIO , therefore if you are using telnet method you need to connect again by telnet program.

```
[Startup PGM] *****
[Startup PGM] * End of BOOT program change *
[Startup PGM] * *
[Startup PGM] * This telnet connection will be closed ... *
[Startup PGM] * *
[Startup PGM] * Now restart OfficeServ100 System! *
[Startup PGM] *****
```