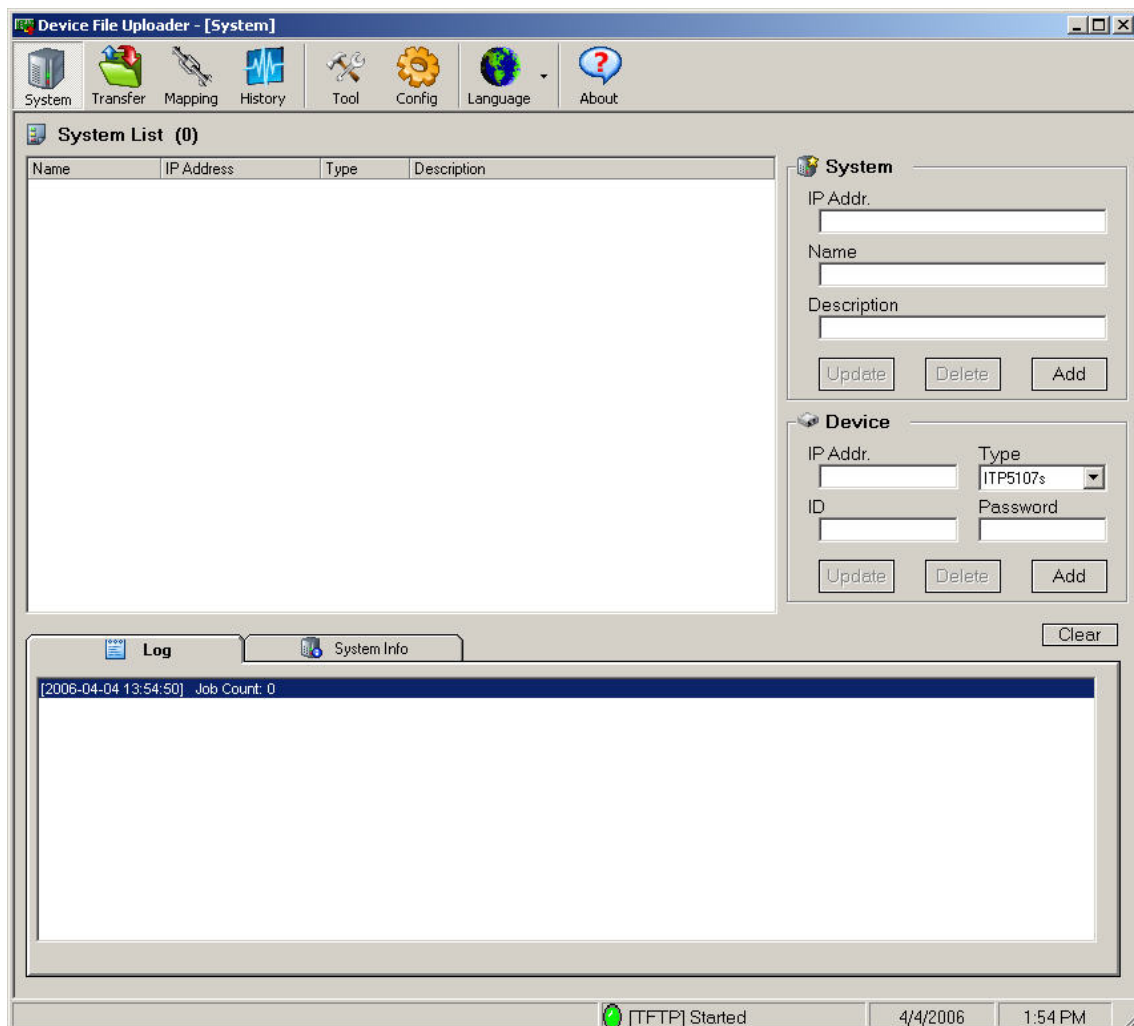


Device File Uploader User's Manual

Table of Contents

1. MAIN SCREEN	3
2. SYSTEM	4
2.1. SYSTEM ADDITION	5
2.2. DEVICE ADDITION	6
2.3. SYSTEM/DEVICE MODIFICATION AND DELETION	7
3. TRANSFER	8
3.1. JOB ADDITION	9
3.2. JOB CANCELLATION.....	10
3.3. JOB COMPLETION	11
4. MAPPING	12
4.1. MAPPING INFORMATION	13
4.2. MAPPING INFORMATION MODIFICATION.....	15
5. HISTORY	16
5.1. HISTORY INFORMATION DELETION	17
6. TOOL	18
6.1. TFTP SERVER	19
6.2. SYSTEM LIST IMPORT/EXPORT	20
7. CONFIG	22
7.1. PREFERENCE.....	23
7.2. DISPLAY	24
8. LANGUAGE	25
8.1. LANGUAGE ADDITION	26
8.2. LANGUAGE APPLICATION	28
9. ABOUT	30

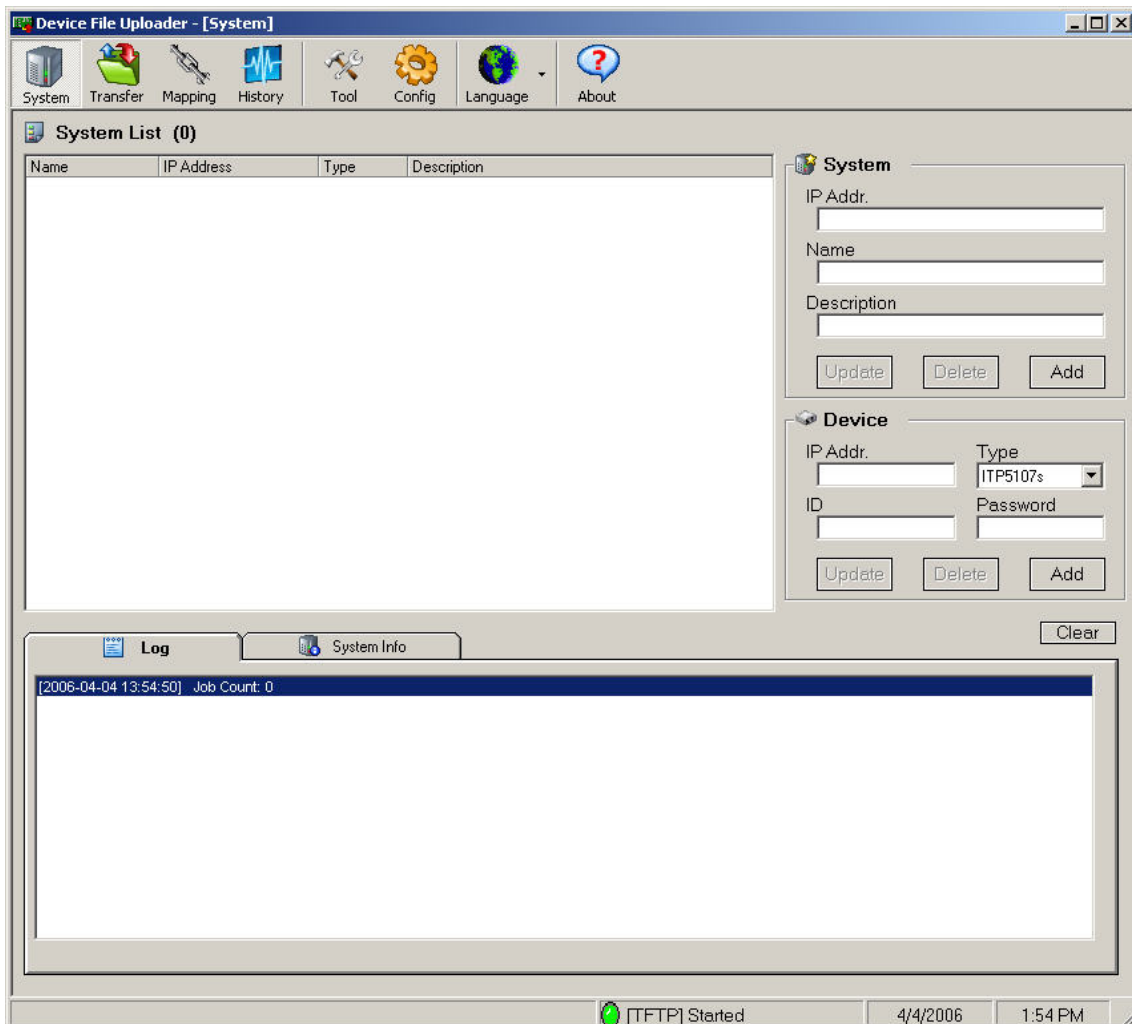
1. Main Screen



If run program, you can see screen such as upside.

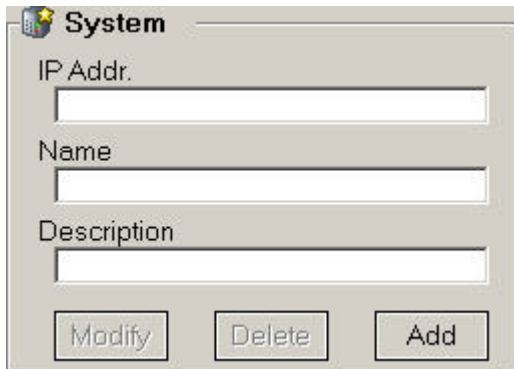
In first run time, basis language of program is English, and you can change the display language in [Language] menu. (Reference: chapter 8)

2. System



Upside screen is [System] menu screen, and you can modify/delete/add the system or device. Also, you can see active state of program and additional information of connecting system/device.

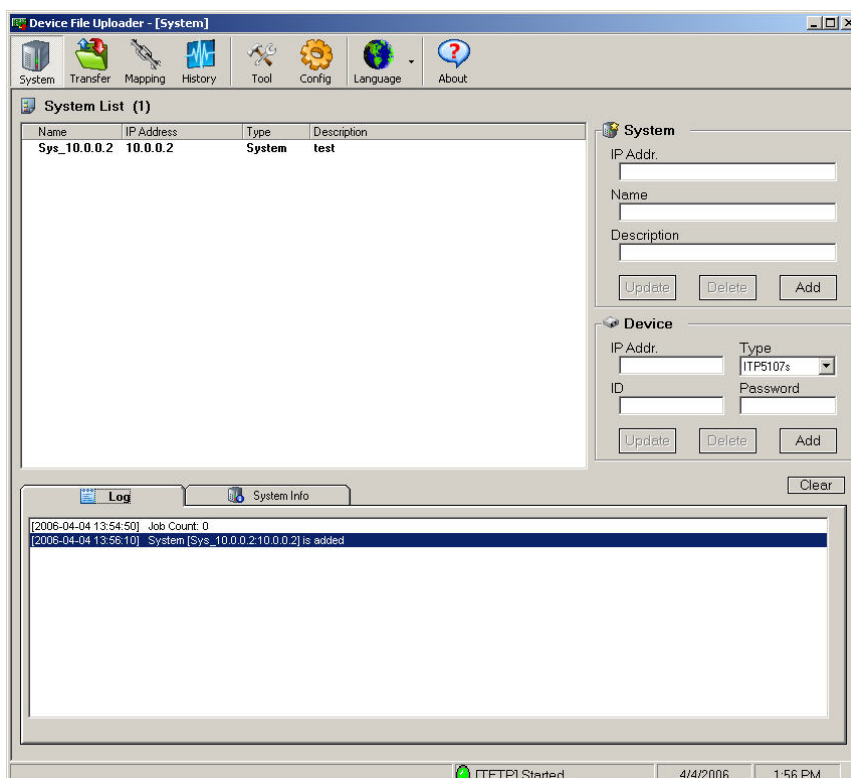
2.1. System addition



A dialog box titled "System" with a yellow star icon. It contains three text input fields labeled "IP Addr.", "Name", and "Description". Below the fields are three buttons: "Modify", "Delete", and "Add".

1. Input IP of system that wish to add.
2. Input a name to distinguish each system.
(The name is established automatically if input IP, and user can change it.)
3. Input additional information on description..
4. Press [Add] button.

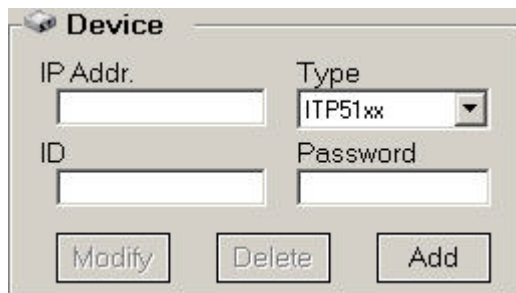
You can see following screen if addition is achieved normally.



The "Device File Uploader - [System]" window shows the "System List (1)" table with one entry: Sys_10.0.0.2, 10.0.0.2, System, test. The right panel has "System" and "Device" sections, each with input fields and "Update", "Delete", and "Add" buttons. The bottom panel shows a "Log" tab with a message: "[2006-04-04 13:56:10] System [Sys_10.0.0.2:10.0.0.2] is added". The status bar at the bottom indicates "[TFTP] Started", "4/4/2006", and "1:56 PM".

Name	IP Address	Type	Description
Sys_10.0.0.2	10.0.0.2	System	test

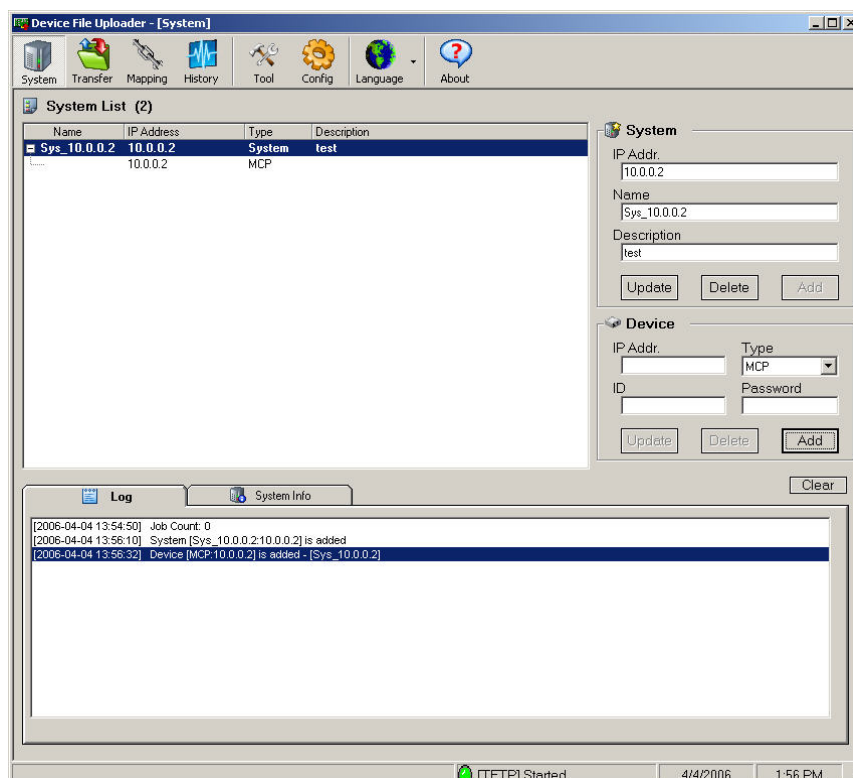
2.2. Device addition



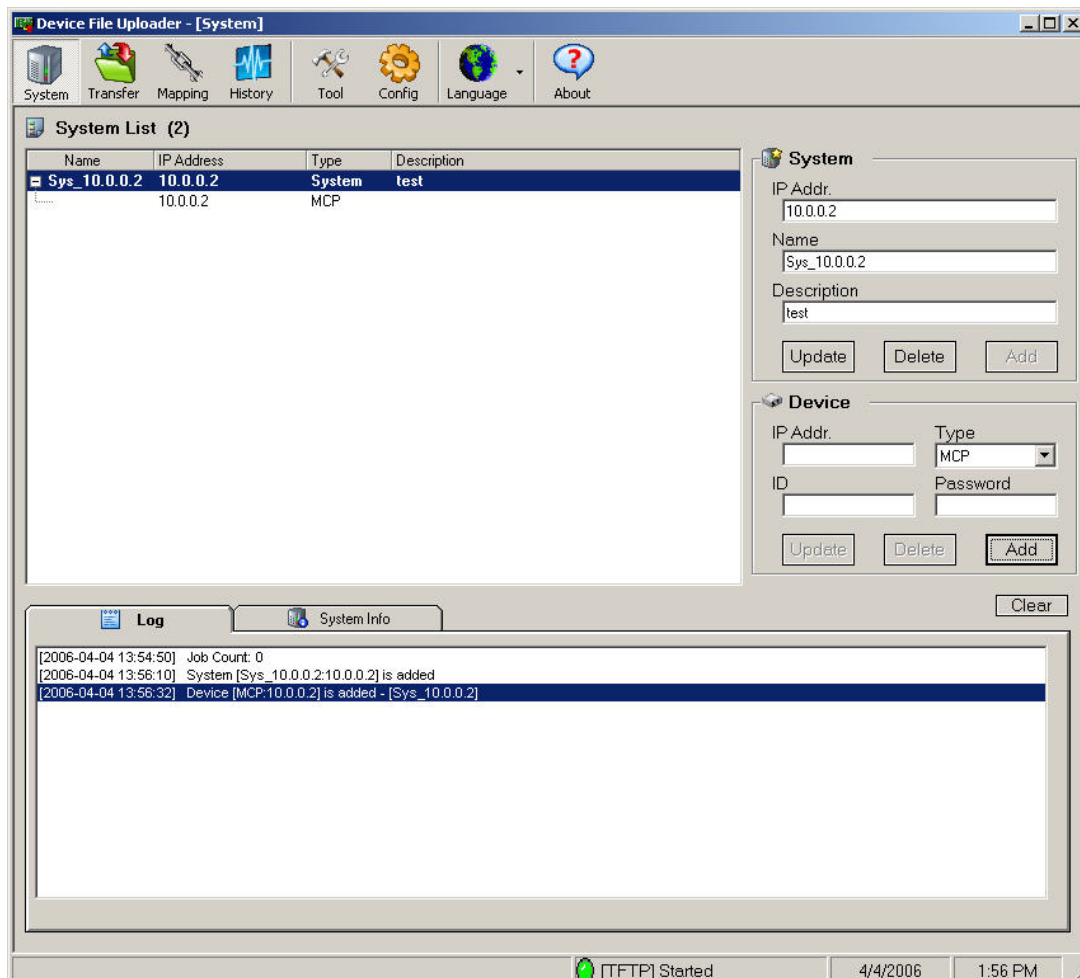
A dialog box titled "Device" with a small icon of a computer. It contains four input fields: "IP Addr." (text box), "Type" (dropdown menu showing "ITP51xx"), "ID" (text box), and "Password" (text box). At the bottom are three buttons: "Modify", "Delete", and "Add".

1. Input IP of device that wish to add.
2. Select type of relevant device.
3. Input ID and password necessary for connection of file transfer.
(If select type, ID and password are established by default value in [mapping] menu, and user can change it.)
4. Press [Add] button.

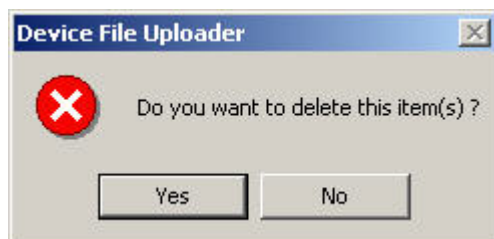
You can see following screen if addition is achieved normally.



2.3. System/Device modification and deletion

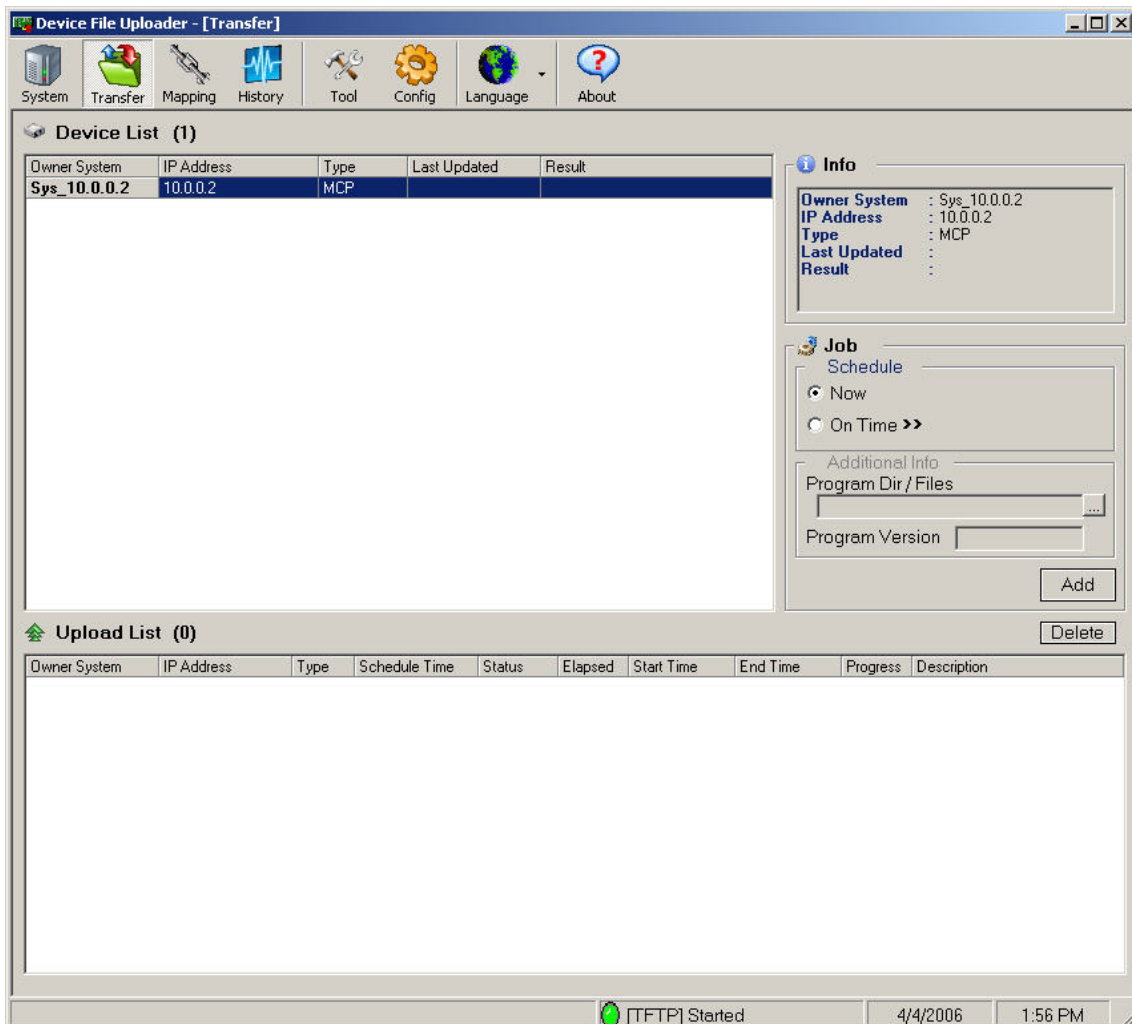


- Modification
 1. Select system or device that wish to modify in system list.
 2. Modify contents of item that wish to change.
 3. Press [Modify] button.
- Deletion
 1. Select system or device that wish to delete in system list.
 2. Press [Delete] button.
 3. Press [Yes] button in confirmation window.



(Only, all subject devices are deleted to relevant system in case of delete system.)

3. Transfer

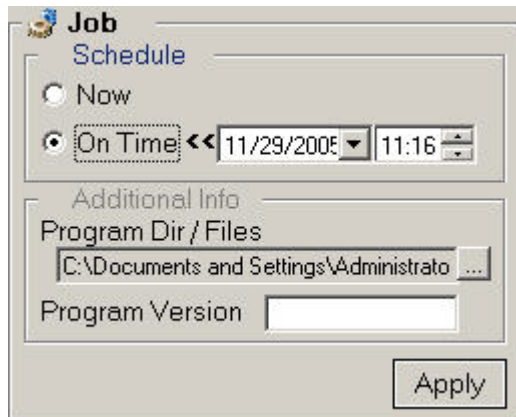


Upside screen is [Transfer] menu screen, and you can establish information about file transfer.

When file transfer is progressing, if press program exit button, following screen is displayed, and end of program is canceled. That is, you must finish firstly file transfer to end program.

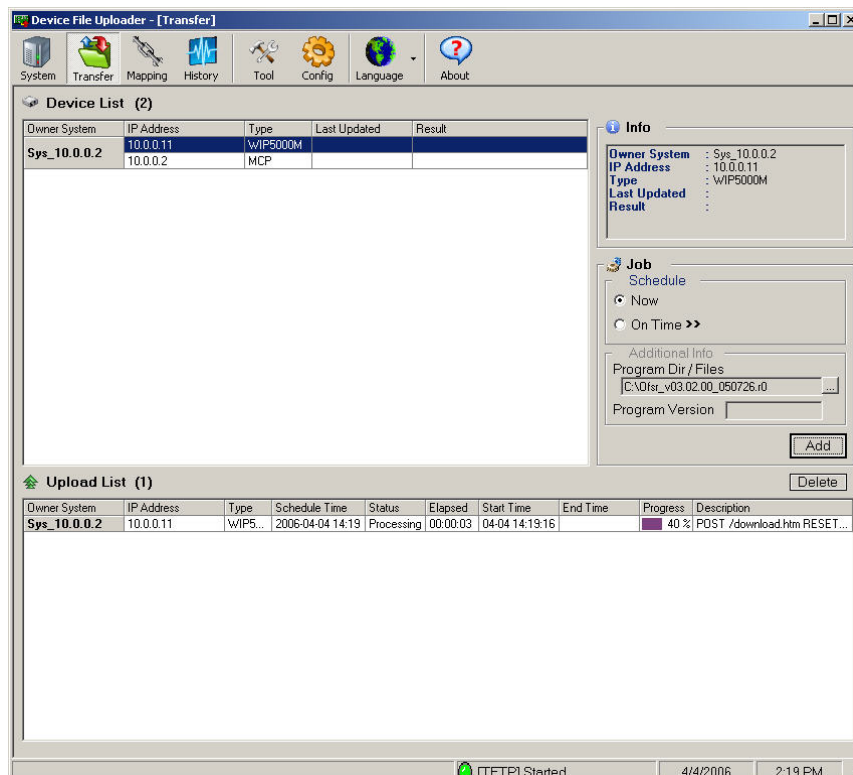


3.1. Job addition



1. Select schedule to achieve job.
(If choose reservation, input reservation time wants as is registered.)
2. Select program dir/file to transmit.
(If select device, program dir/file is established by program attribute saved in [Mapping] menu, and user can modify.)
3. Input version of relevant program.
4. Press [Apply] button.

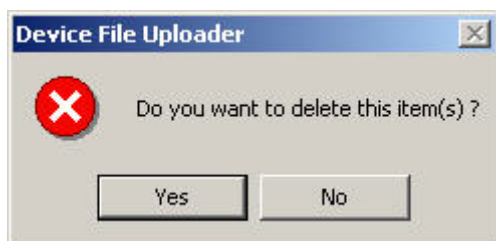
You can see following screen if addition is achieved normally.



3.2. Job Cancellation

Owner System	IP Address	Type	Schedule Time	Status	Elapsed	Start Time	End Time	Progress	Description
Sys_10.0.0.2	10.0.0.11	WIP5...	2006-04-05 14:18	Ready					

1. Choose job of Ready status in upload list.
2. Press [Delete] button.
3. Press [Yes(Y)] button in confirmation message window.



The item is erased in upload list if cancellation is achieved normally.

3.3. Job completion

You can see following screen if job is finished normally.

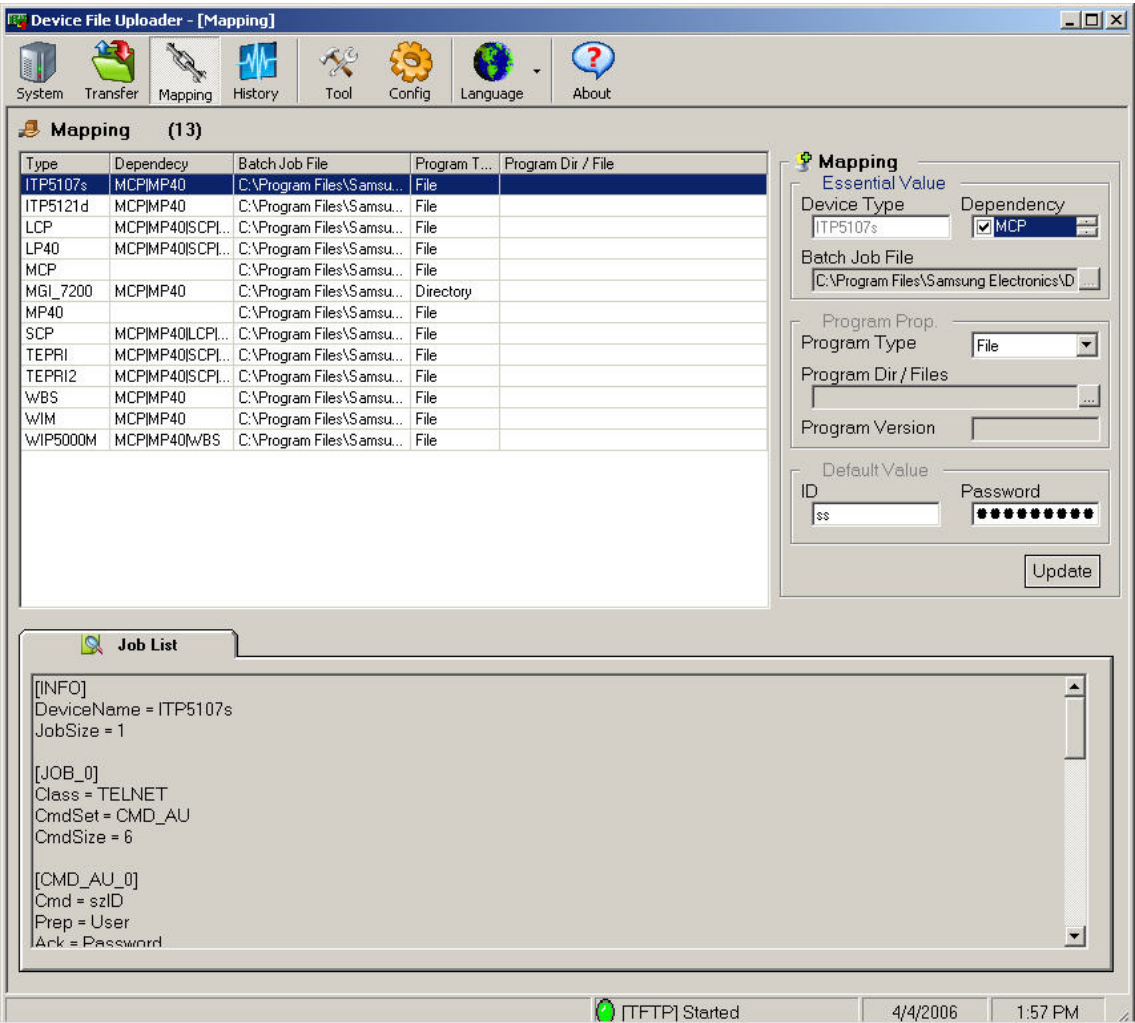
Owner System	IP Address	Type	Last Updated	Result
Sys_10.0.0.2	10.0.0.11	WIP5000M	2006-04-04 14:19	Success
	10.0.0.2	MCP		

According to job result,

- In case of success: Letter color of relevant job is registered blue
- In case of failure: Letters color of relevant job is registered red, and failure cause is registered in description column.

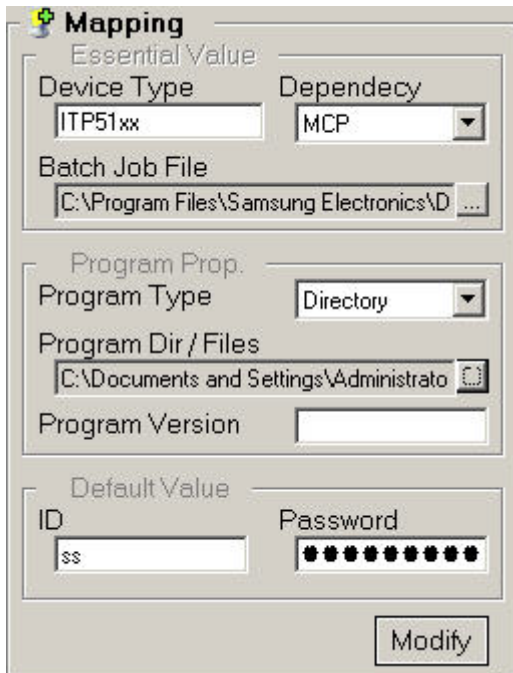
Also, job result is reflected in last modified date and result column of device list, and is stored to history information.

4. Mapping



Upside screen is [Mapping] menu screen, and you can input information about device. Relevant information is used by default value of [System] menu and [Transfer] menu.

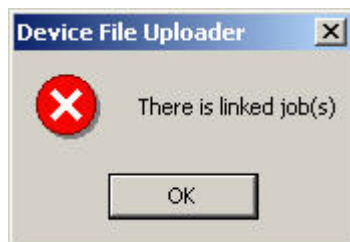
4.1. Mapping information



The 'Mapping' dialog box is divided into three sections: 'Essential Value', 'Program Prop.', and 'Default Value'. The 'Essential Value' section contains 'Device Type' (text box with 'ITP51xx'), 'Dependency' (dropdown menu with 'MCP'), and 'Batch Job File' (text box with 'C:\Program Files\Samsung Electronics\ID ...'). The 'Program Prop.' section contains 'Program Type' (dropdown menu with 'Directory'), 'Program Dir / Files' (text box with 'C:\Documents and Settings\Administrato'), and 'Program Version' (empty text box). The 'Default Value' section contains 'ID' (text box with '\$\$') and 'Password' (password field with 10 dots). A 'Modify' button is located at the bottom right.

- Basis value : Read Only

1. Dependency: It is necessary device to use relevant device (all devices are subject to MCP, and WIP is subject to WBS). When file transfer of dependency device is in schedule or progressing, following screen is displayed if execute file transfer, and file transfer of relevant device is limited. Also, it is same in the opposite case.



2. Batch job file: It is a file that have work list to do at file transfer of relevant device.

- Program prop: It is used by device kind's default value of relevant device in [Transfer] menu. Because program property for each device can differ, you must confirm it in [Transfer] menu.
- Default value: When add a device in [System] menu, it is used by default value. Because ID and password of each device can be changed using administration

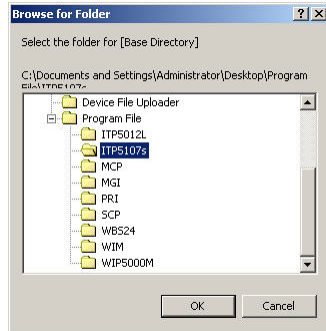
program etc., actual ID and password of relevant device should be inputted in case of device addition/modification in [System] menu.

4.2. Mapping information modification

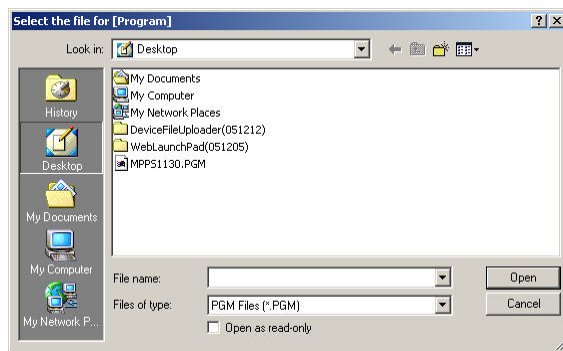
1. Select program type (dir/file) for relevant device.
2. Select program dir/file.

According to program type, you can see following screen.

- When program type is a folder

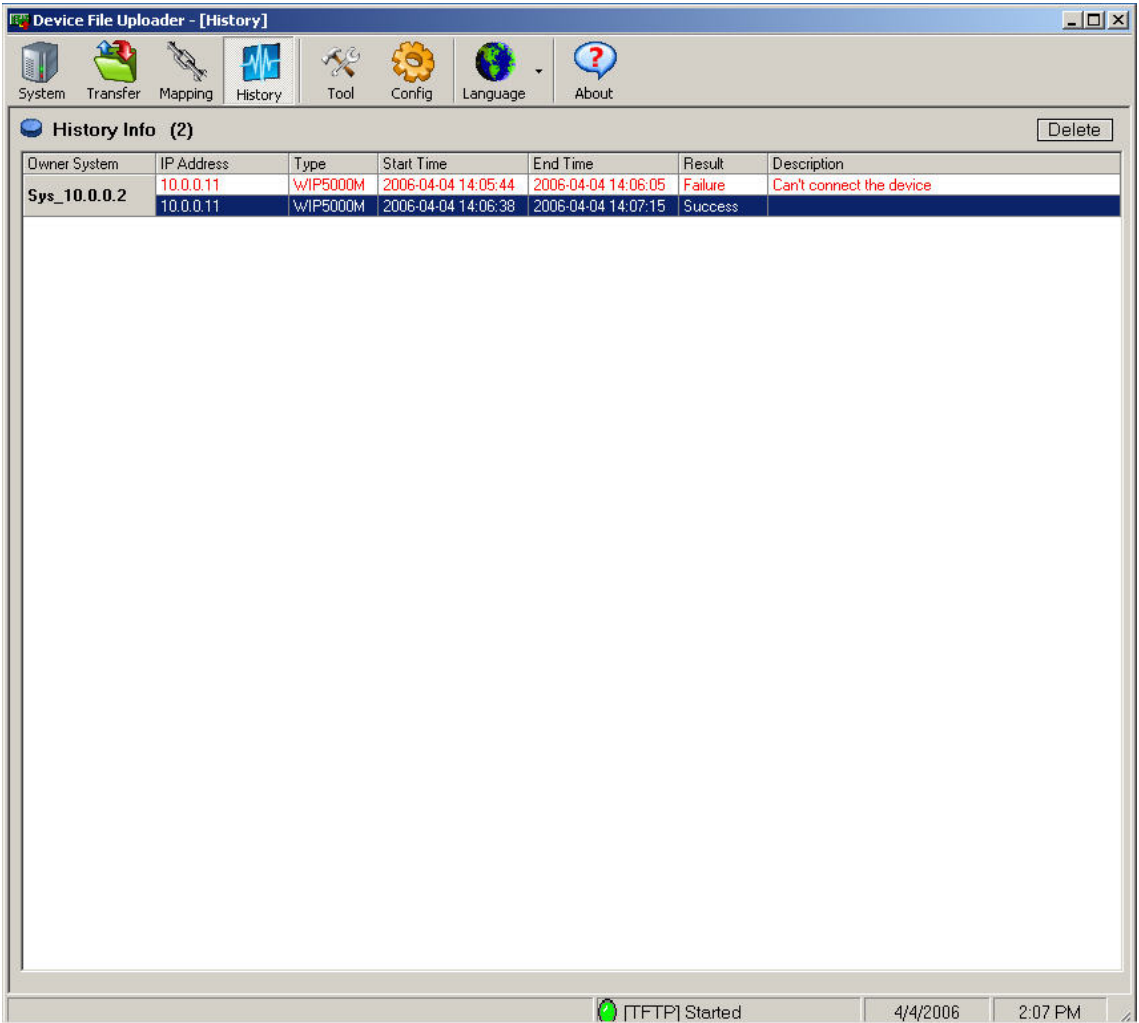


- When program type is a file



3. Input program version of relevant dir/file.
4. Input necessary ID and password for file transfer of relevant device.

5. History

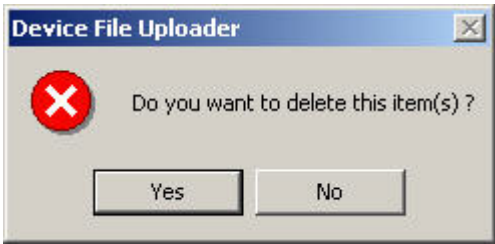


Upside screen is [History] menu screen, and you can see history information about file transfer result.

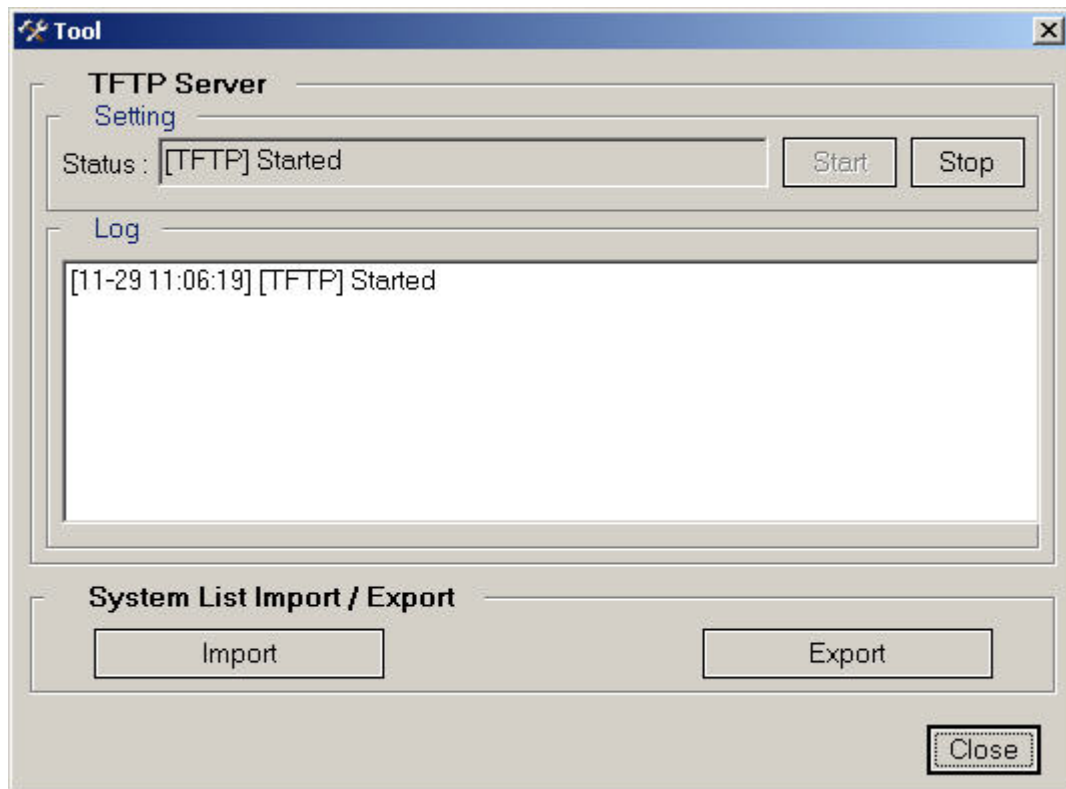
5.1. History information deletion

Owner System	IP Address	Type	Start Time	End Time	Result	Description
Sys_10.0.0.2	10.0.0.11	WIP5000M	2006-04-04 14:05:44	2006-04-04 14:06:05	Failure	Can't connect the device
	10.0.0.11	WIP5000M	2006-04-04 14:06:38	2006-04-04 14:07:15	Success	

- 1. Choose the history item(s) that wish to erase in history info list.
- 2. Press [Delete] button.
- 3. Press [Yes] button in confirmation message window.



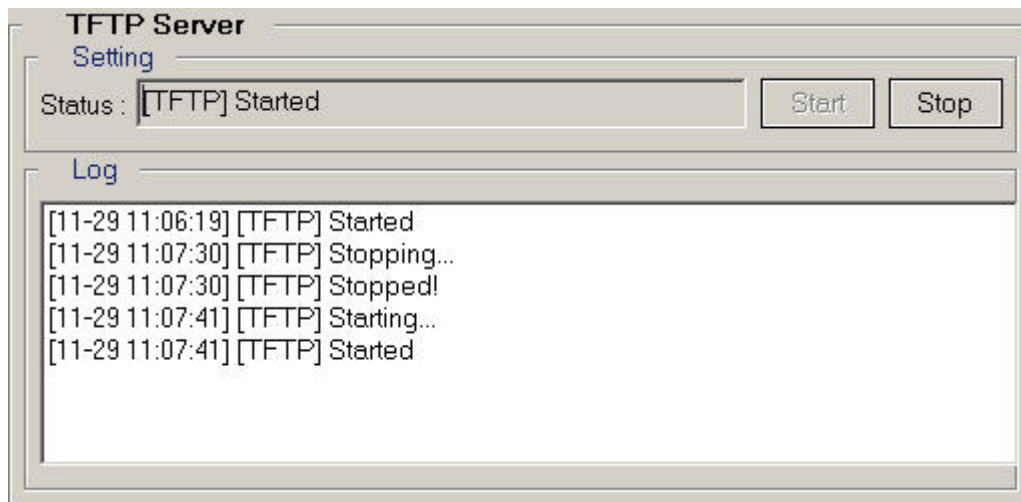
6. Tool



Upside screen is [Tool] menu screen. You can start/stop TFTP server, and can see active state of TFTP server. Also, you can import/export the system list file.

6.1. TFTP Server

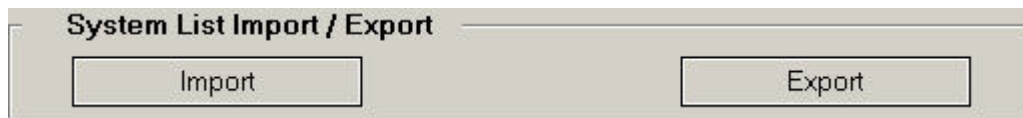
TFTP server is used in file transfer of WIP etc.



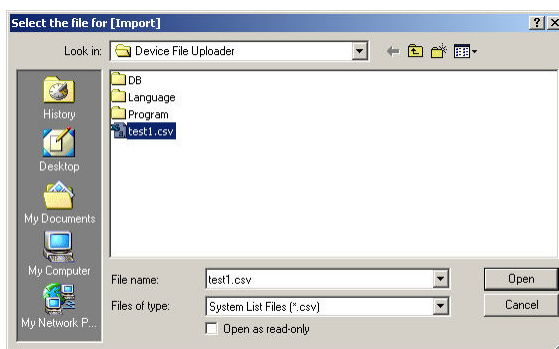
- Setting: Using [Start]/[Stop] button, you can start/stop TFTP server.
- Log: You can see TFTP server's active state.

6.2. System list import/export

Supported file form is CSV (Comma Separated Value).



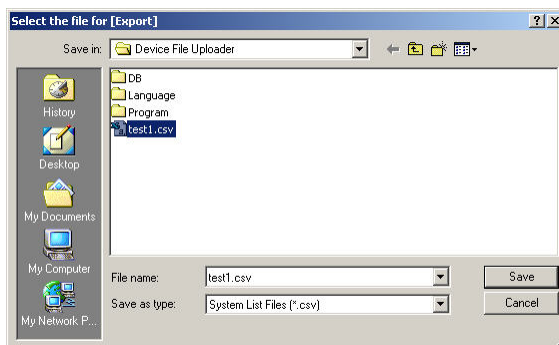
- System list import
 1. Press [Import] button.
 2. Select file to import in file selection window.
 3. Press [Open] button.



You can see following screen if it is attained normally to import.



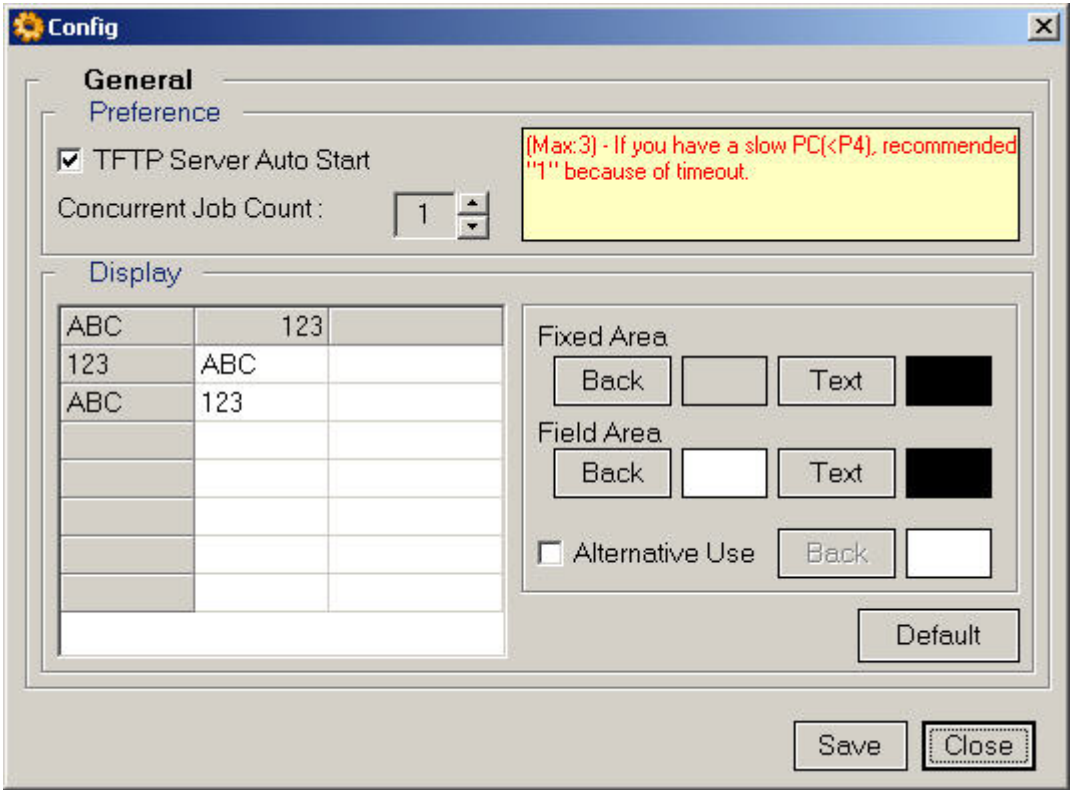
- System list export
 1. Press [Export] button.
 2. Input file name to export in file selection window.
 3. Press [save] button.



You can see following screen if it is attained normally to export.

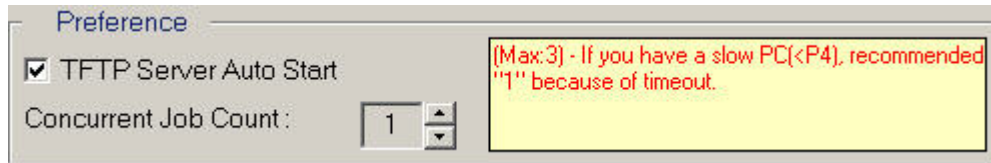


7. Config



Upside screen is [Config] menu screen, and you can establish TFTP server's auto start availability at program start and number of work that can progress at the same time, and change display method of screen.

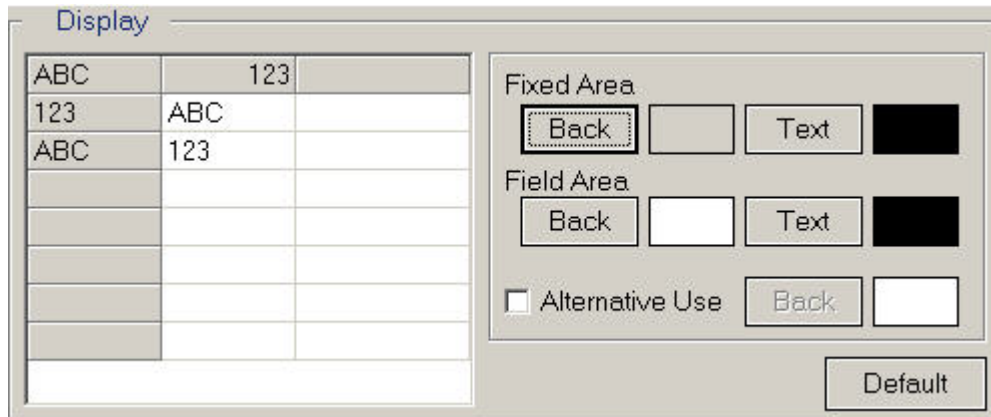
7.1. Preference



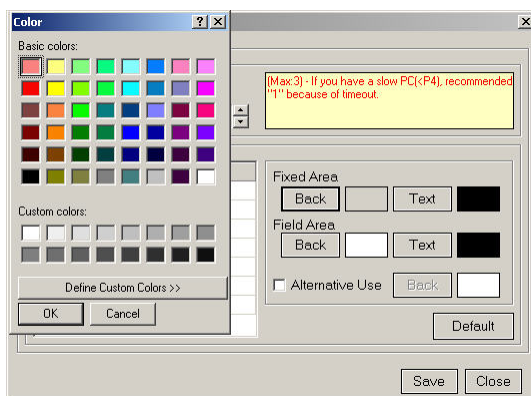
- TFTP server auto start: At program run, decide availability that execute necessary TFTP server for file transfer.
- Concurrent job count: Establish number of available file transfer work at the same time.

(Because relevant value can exchange effect in performance of computer, encourage that do not change default(1).)

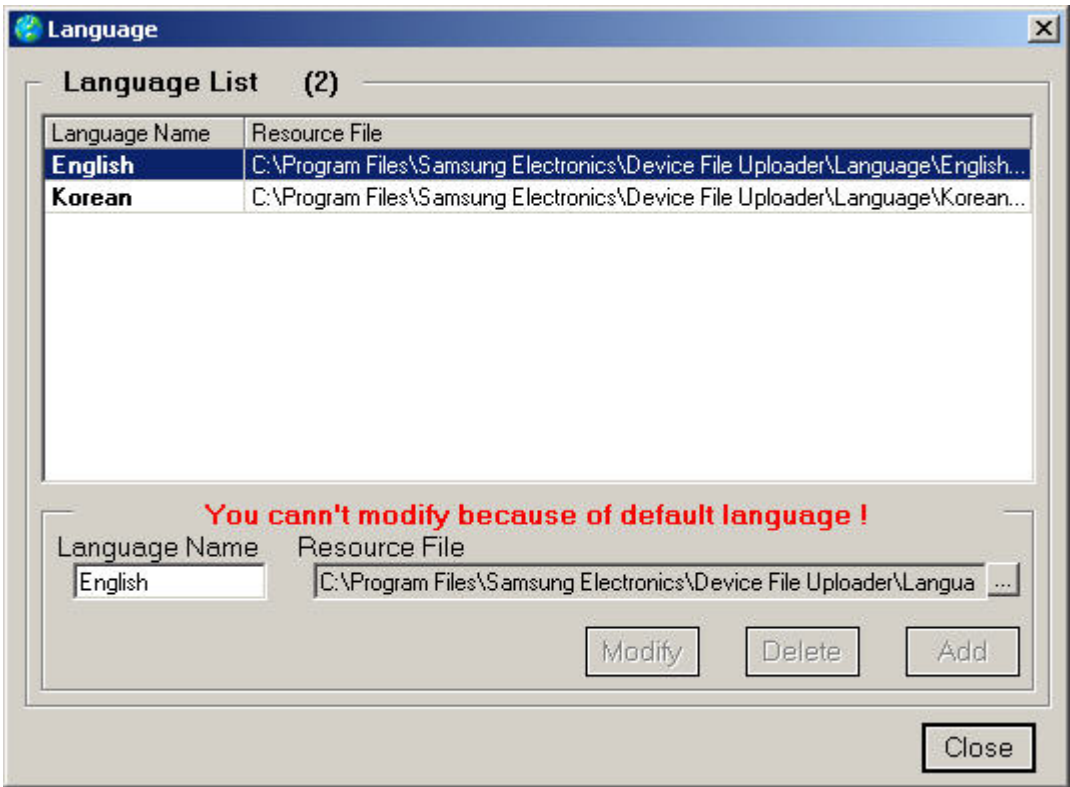
7.2. Display



- Fixed area [Back] [Text]: Specify background color and letter color of title area at list indication in each window.
- Field area [Back] [Text]: Specify background color and letter color of contents area at list indication in each window.
- Alternative Use [Back]: Decide the usage of alternative row, and specify alternative row's background color of contents area indication.
- [Default]: Change [Back] and [Text] by default value.

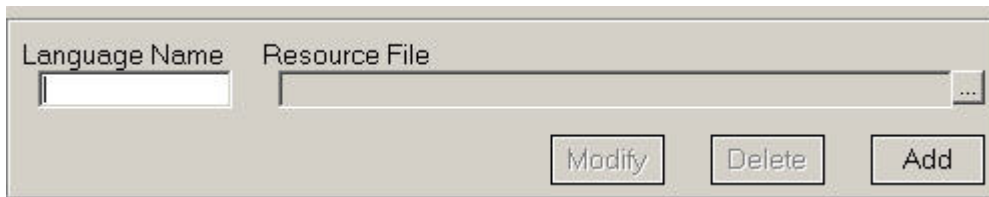


8. Language



Upside screen is [Language] menu screen, and you can modify/delete/add language item.

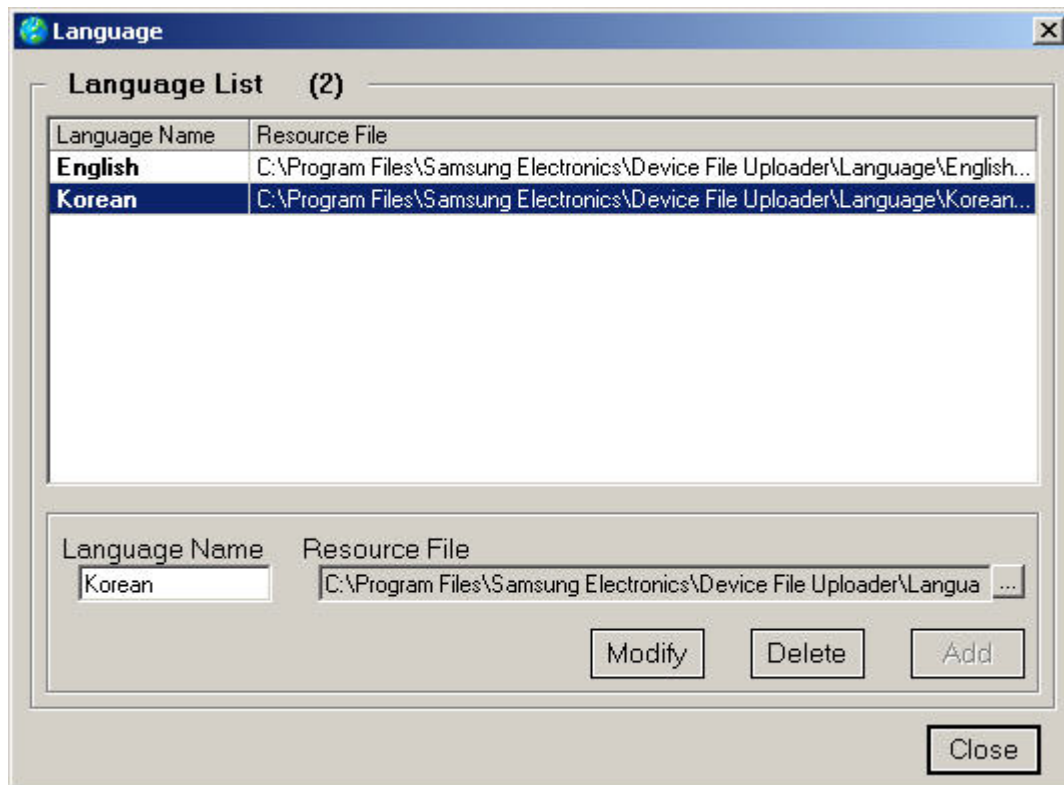
8.1. Language addition



The image shows a graphical user interface for adding a language. It consists of a light gray rectangular box. Inside the box, at the top, are two labels: 'Language Name' and 'Resource File'. Below 'Language Name' is a text input field. Below 'Resource File' is a text input field followed by a small button with three dots (a file browser icon). At the bottom of the box, there are three buttons: 'Modify', 'Delete', and 'Add', arranged horizontally from left to right.

1. Input the name of language.
2. Select resource file for relevant language.
3. Press [Add] button.
(Only, "Engilsh" as default language can not be modified/deleted/added.)

8.2. Language

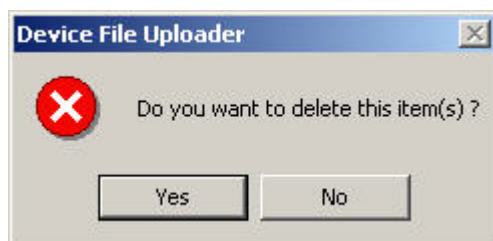


- **Modification**

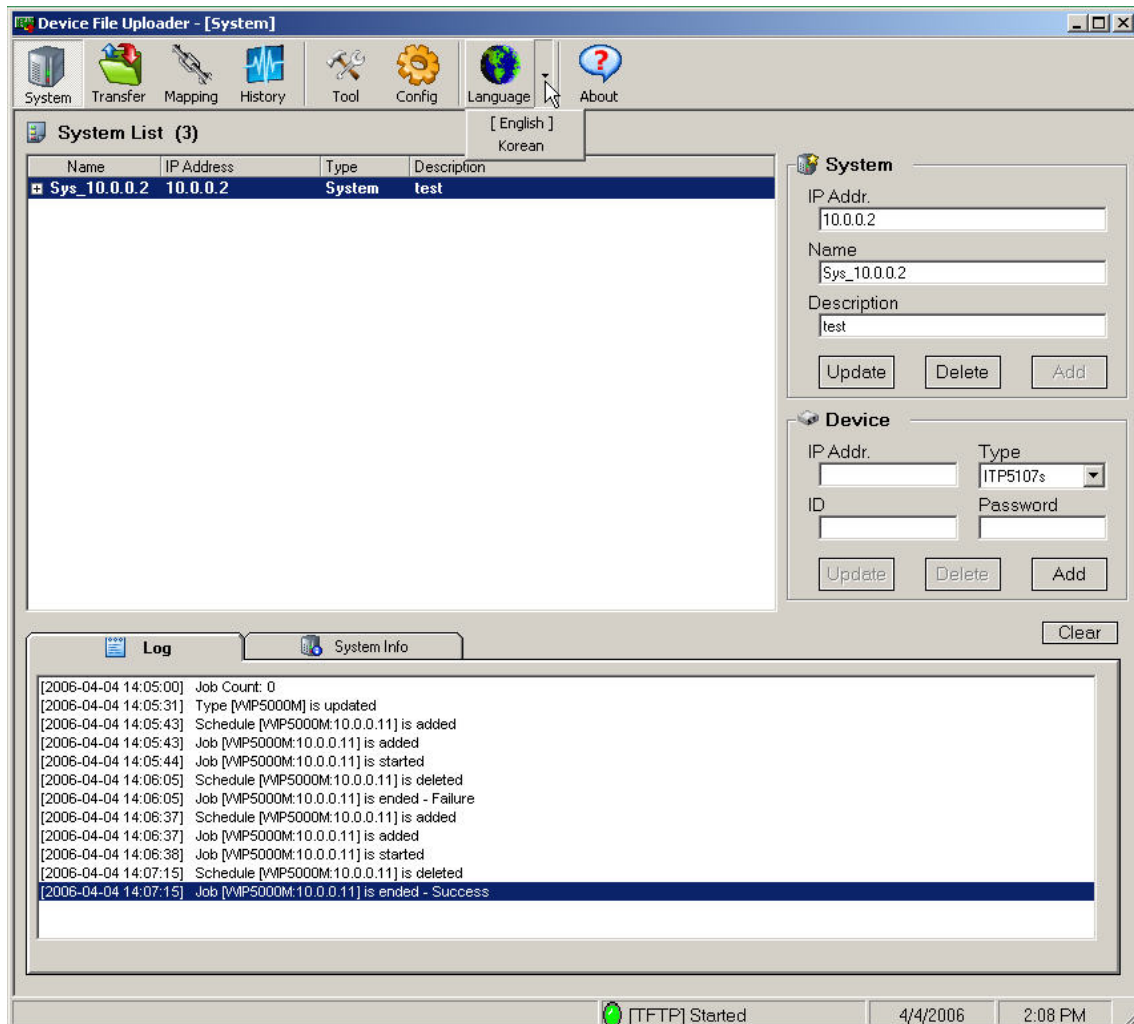
1. Select the language that wish to be modified in language list.
2. Modify contents of item that wish to change.
3. Press [Modify] button.

- **Deletion**

1. Select the language that wish to remove in language list.
2. Press [Delete] button.
3. Press [Yes] button in confirmation message window.



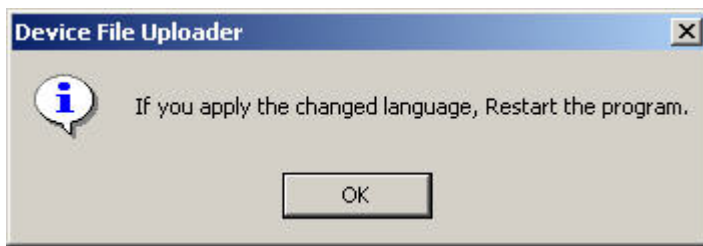
8.2. Language Application



1. Press [Language] button side [▼] button in main screen.
2. Select language that wish to establish in language list.
3. Press [Yes(Y)] button in confirmation message window.

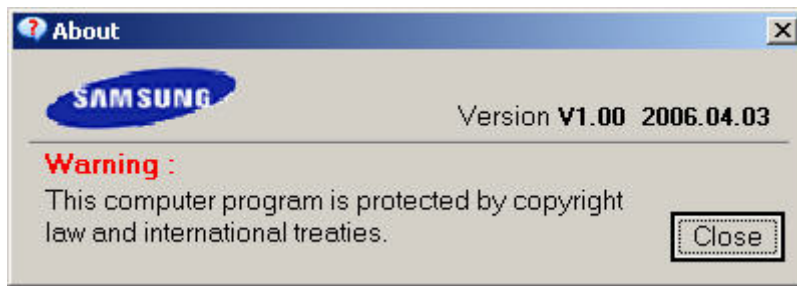


You can see following message window if language application is achieved normally.



If you restart the program, program can confirm that was applied in language.

9. About



Upside screen is [About] menu screen, and version of program is registered.