

MGI64 Upgrade Procedure (Simple Look)

1. Connect SIO Cable

SET : 36800-8-none-1-none

2. Login MGI64 Board.

- * Bootrom Mode: id - mgi, pwd - mgi
- * Program Mode: id - mgi, pwd - mgi1234
- * Telnet Mode: id - mgi, pwd - mgi12345

3. Run Config Command.

- * Input "allset" command and follow the command.

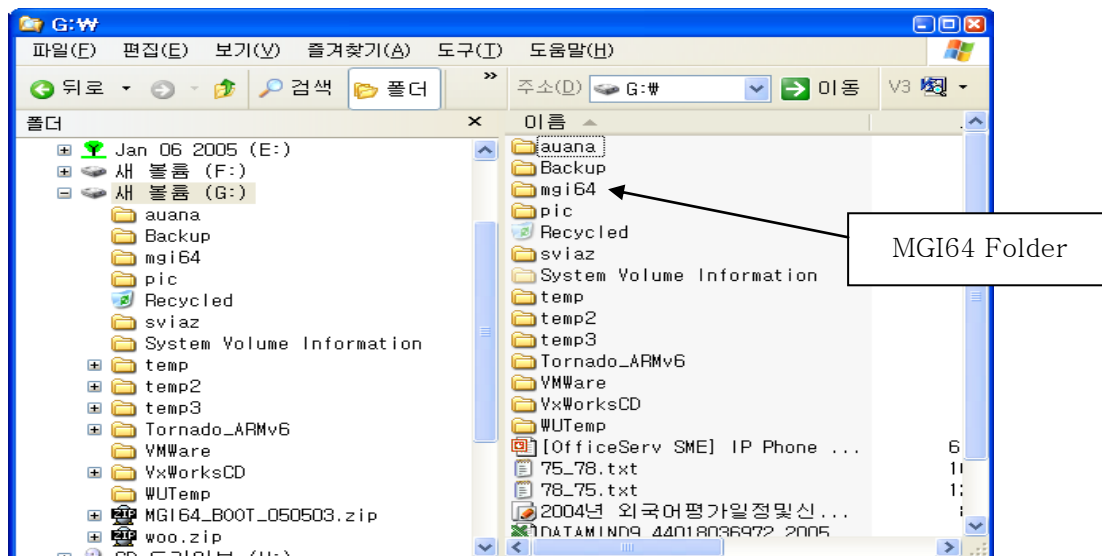
4. Reboot

MGI64 Card use the tftp upgrade method.

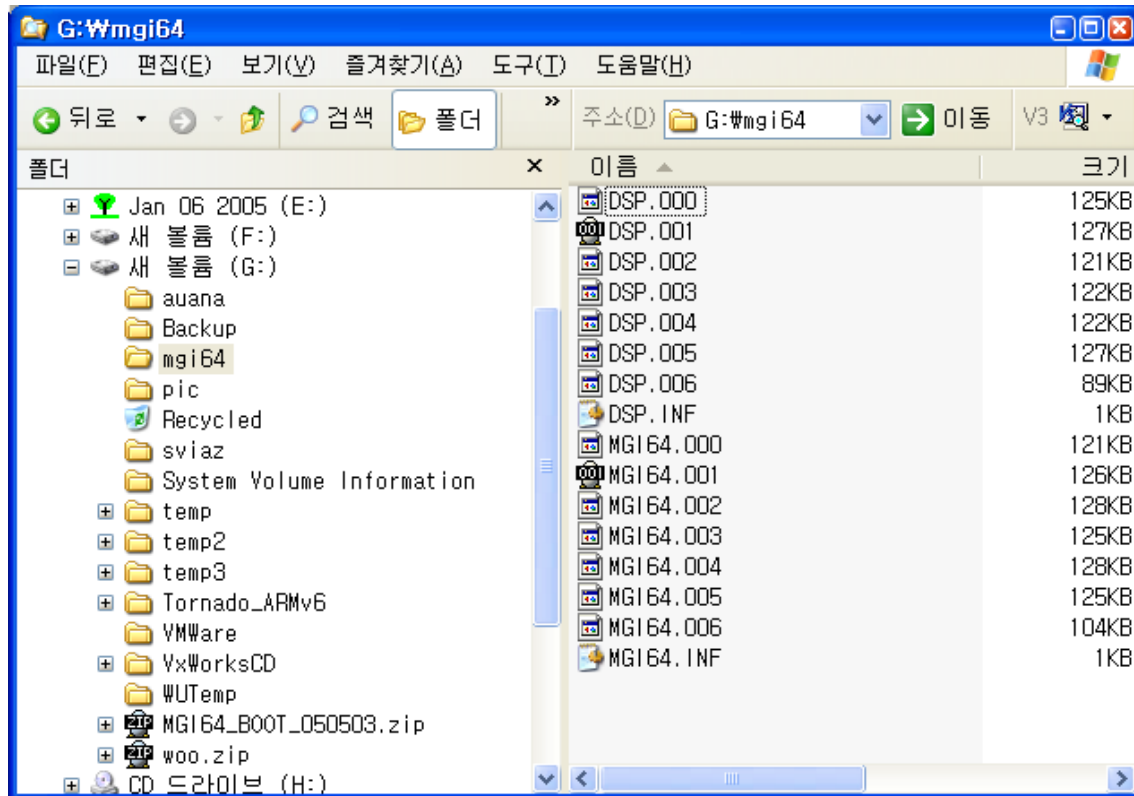
so, prepare one computer for tftp server, and SIO Cable.

When you configure the tftp server IP address, and MGI64 Card IP address,
Restart the MGI64 Card. It make automatically upgrade MGI64 new S/W.

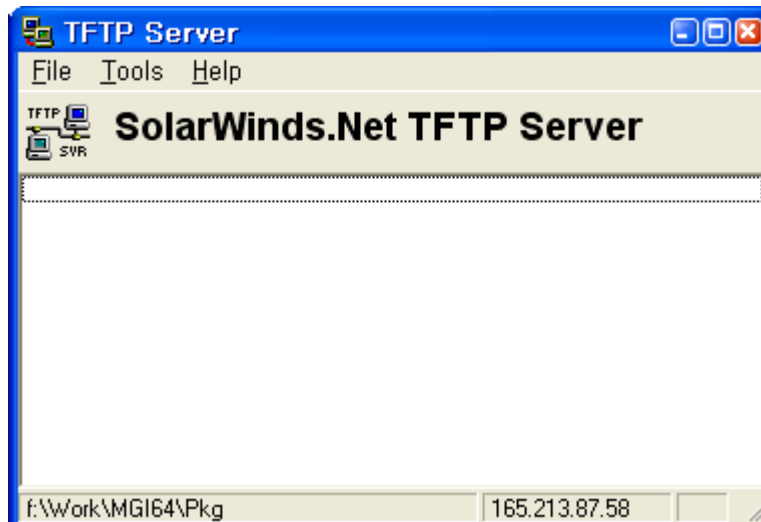
1. Make "MGI64" New Directory.



2. Copy MGI64 S/W

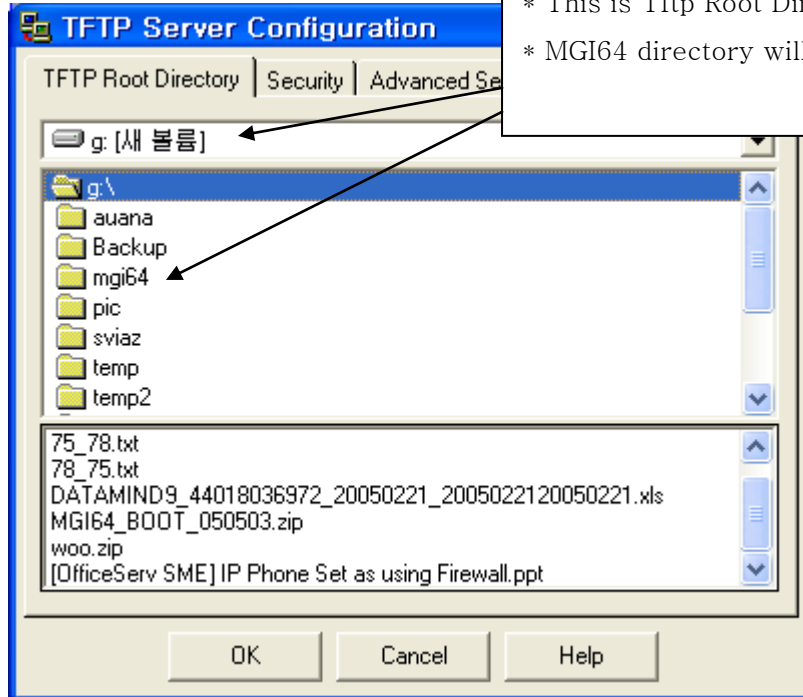


3. First Install tftp Server program.



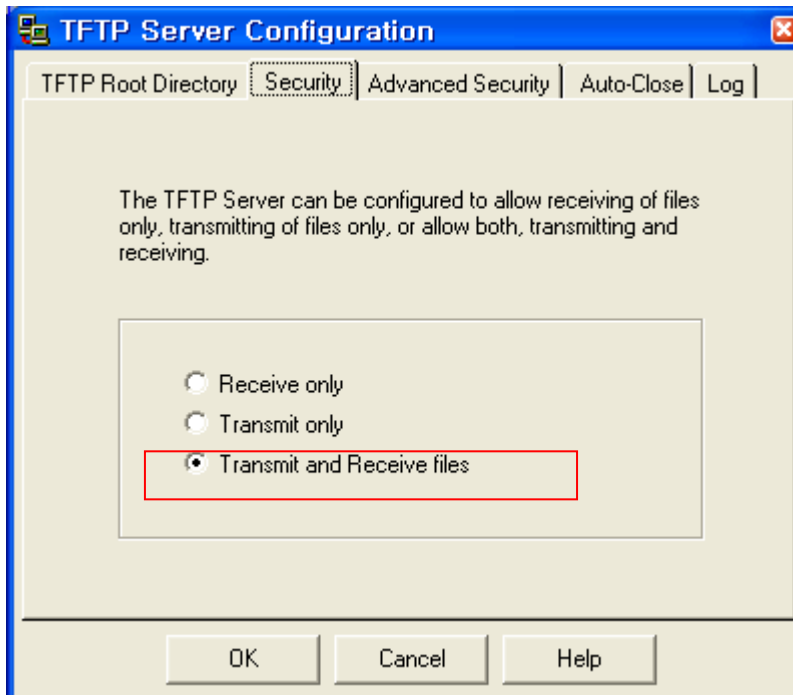
4. Configure tftp Server like below.

File -> Configure



* This is Tftp Root Directory
* MGI64 directory will be show.

5. Check Security Option



6. Connect MGI64 with SIO cable

```
COMI VT
파일(F) 편집(E) 설정(S) 제어(O) Window 도움말(H)

##### Welcome to #####
#####
### #####
### $$$ ##### $$$ $$$
### ##### $$$ $$$
### $$$ $$$ $$$ $$$ $$$ ##### $$$ $$$
### $$$ $$$ $$$ $$$ $$$ ##### $$$ $$$
### ##### $$$ $$$
### ##### $$$ $$$
### ##### $$$ $$$
### ##### $$$ $$$
### ##### $$$ $$$
### ##### $$$ $$$
### ##### $$$ $$$
##### System
#####
##### Boot Version: MG164U1.00, May 13 2005-18:57:41
##### Copyright Samsung Electronics Co., Ltd.

<<<< MG164 network information >>>>
=====
MAC Address : 00:00:F0:C3:21:97:
IP Address : 192.168.8.9
Subnet Mask : 255.255.255.0
Gateway Address : 192.168.8.1
Server Address : 165.213.88.128
=====

ROM Version Setting OK !!!
MG164:192.168.8.9>

-----
If you want to set Network Parameter,
Press Enter Key and Log In Network Setting Mode!!!
-----

count : 4
login:
Password:
MG164:192.168.8.9>
MG164:192.168.8.9>
MG164:192.168.8.9>
MG164:192.168.8.9>
MG164:192.168.8.9>
```

```
테라텀 - COM1 VT
파일(F) 편집(E) 설정(S) 제어(Q) Window 도움말(H)
MGI64:165.213.66.22>

-----
If you want to set Network Parameter,
Press Enter Key and Log In Network Setting Mode!!!
-----

count : 3
login:
Password:
MGI64:165.213.66.22>
MGI64:165.213.66.22>
MGI64:165.213.66.22> allset

MGI64 Network Parameter Change
(If you dont want to modify, Press Enter Key)
=====
Current MGI64 IP Address:165.213.66.22
New MGI64 IP Address:165.213.66.22
Current MGI64 SubnetMask:255.255.255.0
New MGI64 SubnetMask:255.255.255.0
Current MGI64 Gateway:165.213.66.1
New MGI64 Gateway:165.213.66.1
Current Package Server IP Address:165.213.89.128
New Package Server IP Address:165.213.89.128
=====

<<<< MGI64 network information >>>>
=====
MAC Address : 00:00:F0:C3:78:23:
IP Address : 165.213.66.22
Subnet Mask : 255.255.255.0
Gateway Address : 165.213.66.1
Server Address : 165.213.89.128
=====
value = 50 = 0x32 = '2'
MGI64:165.213.66.22>
```

Input “allset” command

Tftp Server IP address

7. After then, reboot, MGI64 Card reload the S/W imge. And save it.